

From Madonna della Castagna to Sombreno

Road access from Bergamo:

Strada ex statale 470/dir. (direction Villa d'Almè), at the traffic lights in Paladina turn right for the Madonna della Castagna. Km. 10

Start of the hike:

Madonna della Castagna car park (275 m.)

Travel time:

1^h 30' circa (a/r)

Height difference:

80 m.

Difficulty:

AE    

Recommended period:

All year round in dry soil.

Water on the route:

YES

Rest stop:

Kiosk - Bar at Madonna della Castagna.

Information:

Municipality of Bergamo, Tel: 035 399111

Topographic map:

Trail map Colli di Bergamo Park, scala 1: 15.000 IGM F. ° 33 III S.E. Bergamo

Geographical coordinates:

45,7226° N, 9,6210° E

This is one of the most beautiful corners of the Parco dei Colli di Bergamo, to which the hilly strip that stretches from the heights of San Vigilio towards the north-west, narrowing like a wedge to the last elevation on which, at 329 metres above sea level, stands the sanctuary of Sombreno.



The route starts at the Madonna della Castagna and reaches Sombreno along the cycle path, from here it climbs to the sanctuary, follows the ridge for a stretch and then returns down to the Madonna della Castagna. The church was erected following the apparition of the Madonna, which occurred on 28 April 1310, to a peasant who was working in the fields. According to local tradition, the name given to the church originates from the fact that, at the apparition, a chestnut tree was covered with green leaves and curls with the fruit already ripe.



We start the route from the car park of the Madonna della Castagna church.



We walk towards Sombreno following the cycle path that starts not far from the church façade; it is a flat road with an asphalt surface.



At a wide bend we take a left onto the road between the forest and cultivated fields.



On our left we observe a picnic area equipped with tables and benches.



We easily reach a parking area near Villa Agliardi, where the path for wheelchairs and joelettes ends.



We admire the inner park of the villa.



The view of the inner park cheers us up and we are about to continue our route, here the route for wheelchairs and joelettes ends.



Near Villa Agliardi we begin the paved stairway that leads to the hill above where the sanctuary stands.



On the way up we come across votive chapels and a keep, perhaps part of the fortifications interesting the castle.



At the end of the steps we soon reach the church square where we stop to visit the chapel and also admire the view that sweeps over Albenza, the course of the Brembo river and the plain stretching south-westwards.



Turning our backs to the sanctuary, we take the central path (signpost 711) which is flat and follows the ridge in a southerly direction and enters the woods, here we keep to the right.



We continue into the forest, admiring the rich vegetation.



We pass a hunting lodge on our left.



At the crossroads, we keep to the left.



We pass more open areas on our left.



We now descend on a stretch with a few wooden steps on clay soil until we come to a cart track.



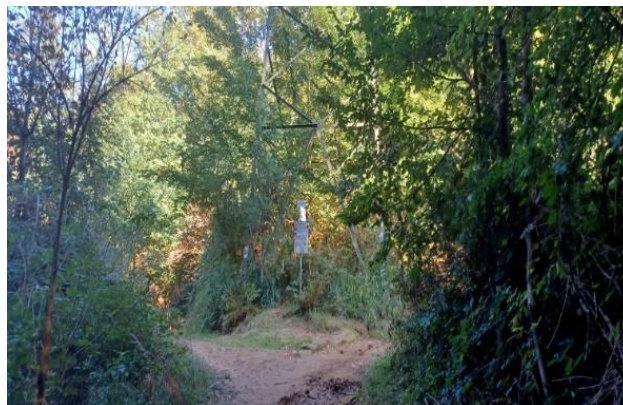
We meet a sign indicating the direction to Roccolone and continue on a slight descent to the right.



The path is now pleasant and the descent is relaxing.



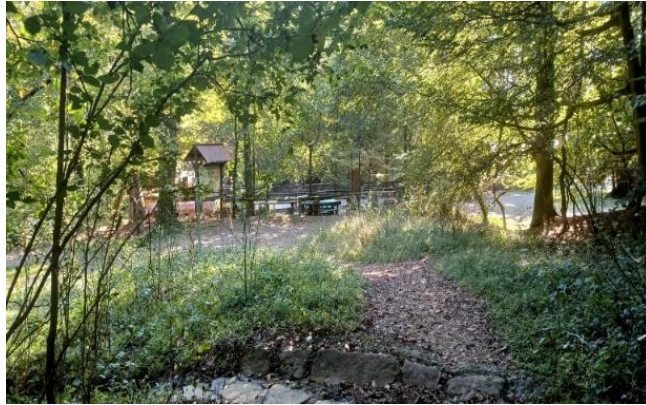
Having reached the crossroads, we turn left and walk along the dirt road uphill, following the signposts.



When we reach the end of the climb, we turn right and walk along the ridge to "Colle Roccolone" (359 m.). Here, at the base of a pylon, a signpost advises us to keep to the right, following route 712, which descends to the church of the Madonna della Castagna (275 m.).



The downhill route will require us to pay a little attention, as we will have to overcome stretches with steps and boulders to avoid.

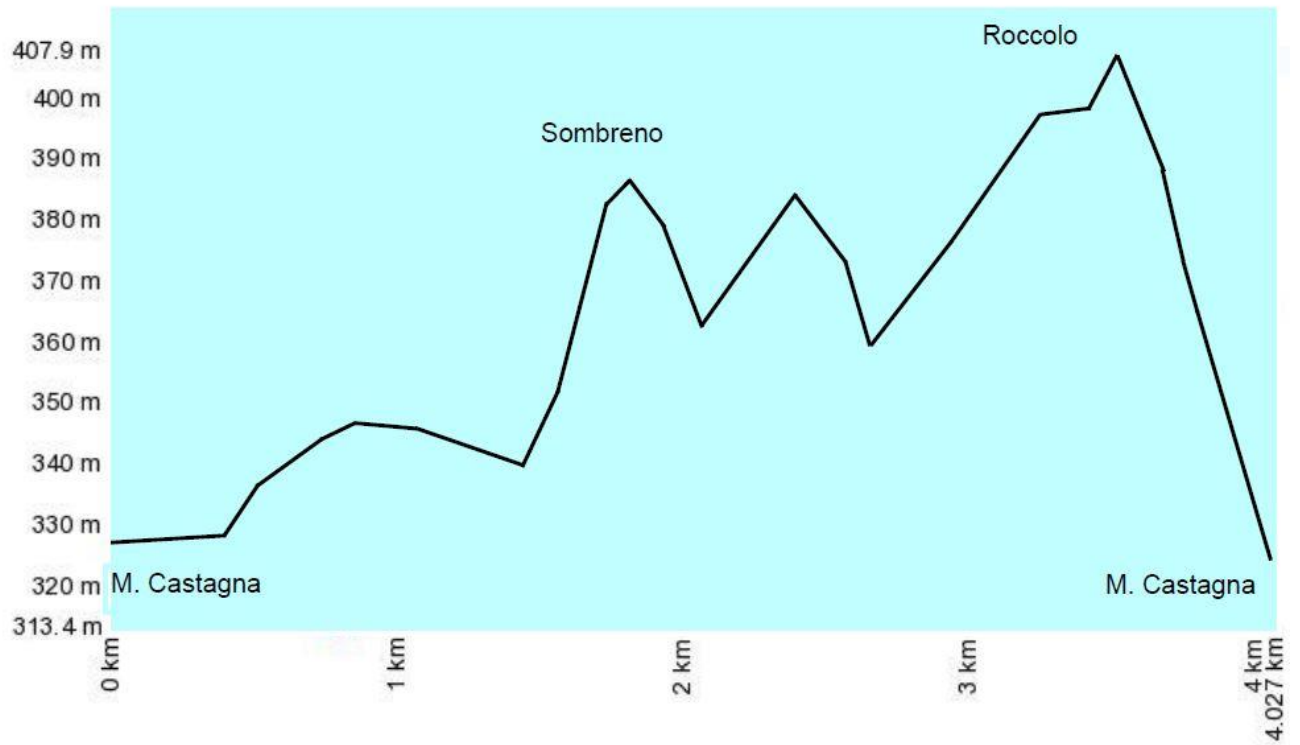


Along the descent, observing the boulders carved by the sculptor Giovanni Benaglia, we reach the equipped area behind the church of the Madonna della Castagna.



We arrive at the end of our tour at the car park from which we started.

Altimetria



Mappa del percorso

