

Pizzino Salzana and Fraggio

Road access from Bergamo:

Villa d'Almè, Zogno, San Pellegrino Terme, San Giovanni Bianco, Sottochiesa (Valle Taleggio), Pizzino
Km. 40

Start of excursion:

Car park of via Paolo VI, Pizzino (960 m.)

Travelling time:

1^h 30' (a/r)

Height difference:

126 m.

Difficulties:

AE  

Recommended period:

All year round

Water on the route:

YES

Rest stop:

NO

Information:

Municipality of (Sottochiesa) Tel: 0345 47021

Topographic map:

IGM F. ° 33 IV S.O. Vedeseta

Geographical coordinates:

45,89911° N, 9,56599° E

The itinerary unfolds in a secluded area of the Taleggio Valley, along ancient mule tracks connecting the village of Pizzino with the sanctuary of Salzana and the farming village of Fraggio.



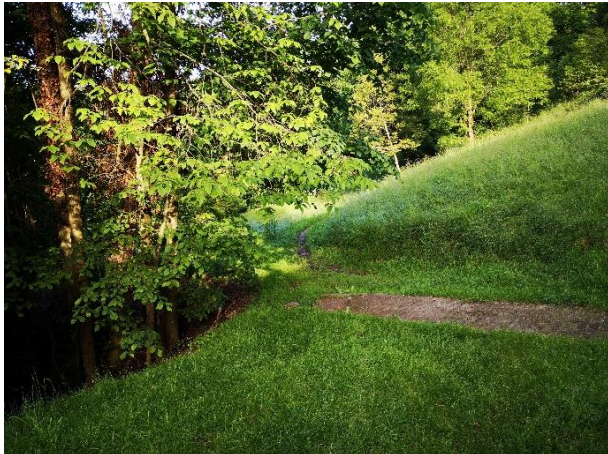
We park our car in via Paolo VI in Pizzino.



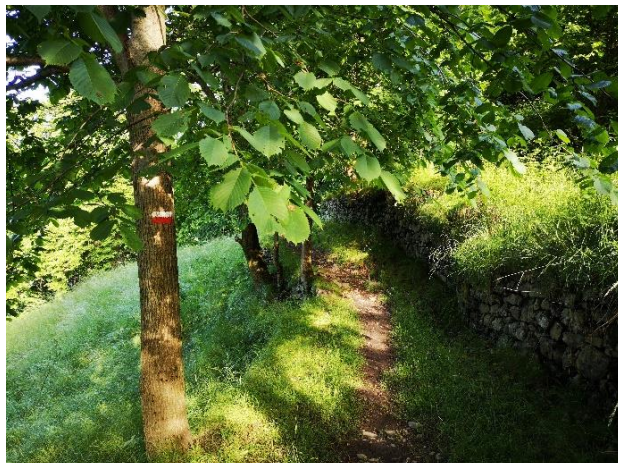
We start our route from via Salzana in the direction of the Madonna Assunta sanctuary.



We pass from an asphalted surface to a downhill cemented section.



Now the path narrows gradually and we turn left.



We are now walking along a real mountain path, the ground is now unpaved.



We have now entered a forest rich in vegetation and we walk along a cobbled section.



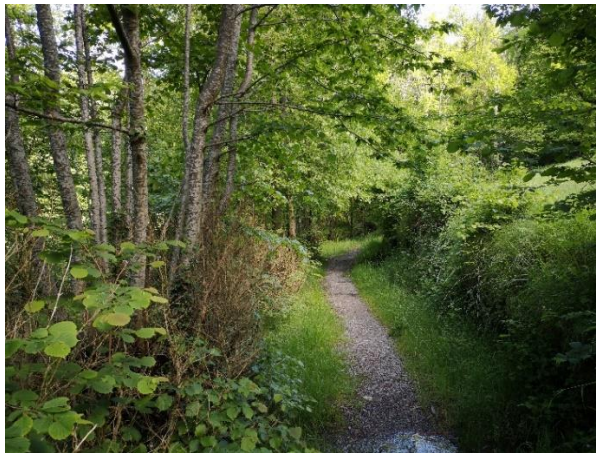
We easily overcome a slight uphill stretch, with some steps on firm ground.



We have now reached the sanctuary of the Madonna Assunta di Salzana.



We pass the sanctuary and walk in the shadow of the bell tower that soars skywards.



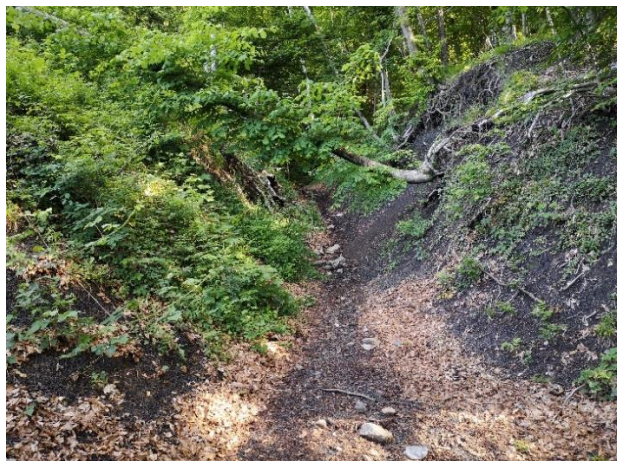
The walk in this section is easy and the path widens slightly.



The ground changes and we face a section on protruding stones; we are on a real mule track.



The path now runs on a mixed ground of earth and small stones.



We pass through this section in a trench under a bridge formed by a tree placed across it.



We reach a ford, which we pass, having disturbed a fawn that is quickly moving away.



We now walk uphill on some large stones, taking care where we put our feet.



The forest gradually thins out and the walk is easy on this stretch with small stones.



We reach a small fountain from where very fresh water gushes out.



We begin to see the first dwellings of Fraggio, the destination of our walk.



A wooden structure welcomes us and says "Welcome to Fraggio".



We are now in front of the 14th-century church of San Lorenzo in the hamlet of Fraggio.



After our stop, we resume our walk passing between the houses and reach an archway on the meadow.



We have started to climb, and on our left we encounter a shrine to the "Madonna dei Fracc".



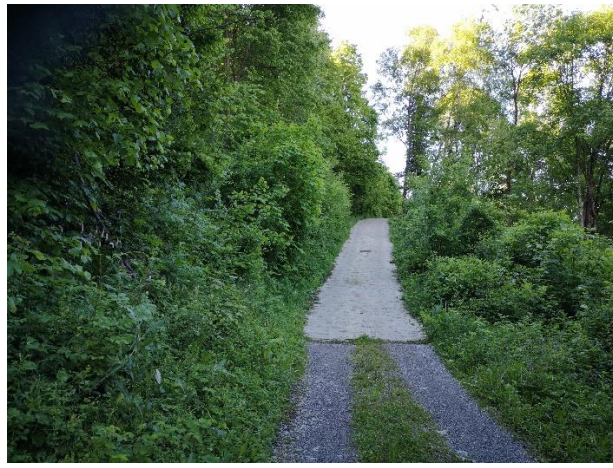
The route is on a wide grassy path that climbs slightly.



We reach an agro-sylvo-pastoral track and turn right.



The ground is that of a fairly wide cart track, which climbs uphill.



We reach a cemented section that eases our path.



We reach a fork that leads us onto Via Arighiglio and we turn right.

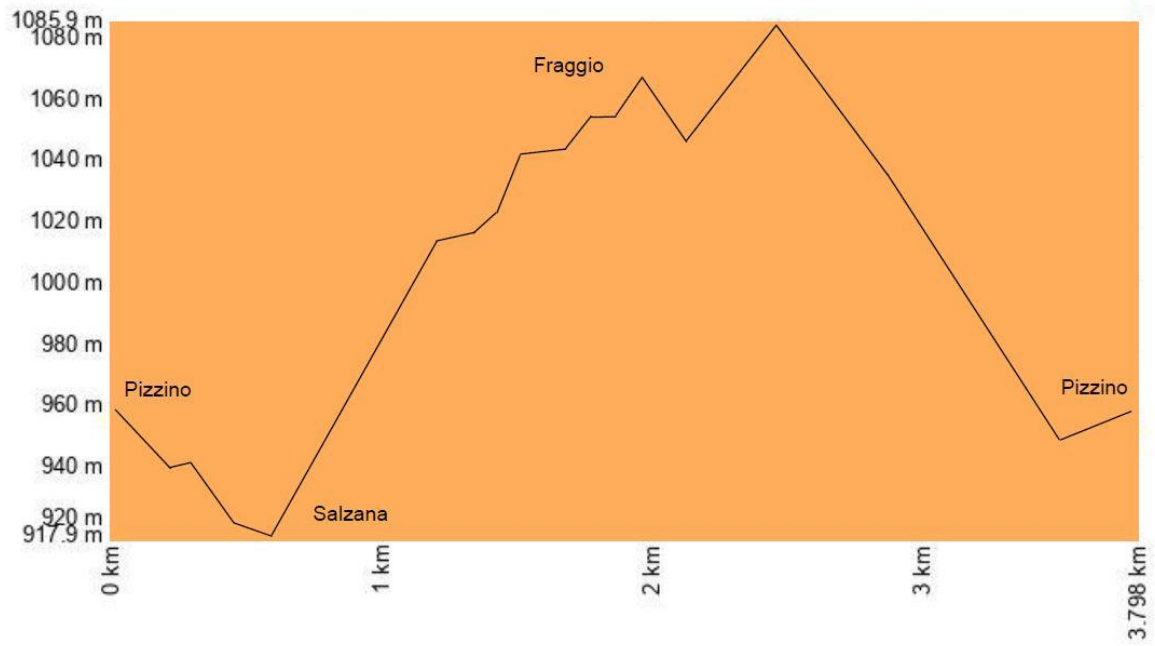


The road is very wide and the descent to Pizzino it is easy; we must watch out for cars.



After a circuitous route, we reach the point from where we started in Pizzino.

Altimetria



Mappa

