

From the Presolana Pass to the Cassinelli hut

Road access from Bergamo:

Clusone (Valle Seriana), Castione della Presolana, Presolana Cantoniera car park
Km. 50

Start of excursion:

Presolana Cantoniera car park (1297 m.)

Travelling time:

2^h (a/r)

Height difference:

270 m.

Difficulties:

AEE 

Recommended period:

April to october

Water on the route:

NO

Rest stop:

Rifugio Medici – Malga Cassinelli Tel: 339 5655793 – 328 8674985

Information:

Rifugio Medici – Baita Cassinelli Trentani Claudio – Tomasoni Mariagrazia

Topographic map:

IGM F. ° 34 IV N.O. Pizzo della Presolana

Geographical coordinates:

45,9298° N, 10,0924° E

After parking the car in the "Presolana Cantoniera car park", we carefully cross the SS 671 road and walk towards the asphalted road that climbs towards the mountain.



At the beginning of the road, we are greeted by a panel, also with Braille writing, informing us of the route we are about to take.



Let us now analyse the legend.



Let us now analyse the legend. After an initial asphalt section, the road now becomes a dirt track. At the second hairpin bend, we turn left near a crossroads with a pole bearing signs for the Malga Cassinelli, on path CAI 316.



Fixed on a stone is a plaque commemorating the inauguration of the adapted path.



The ground is initially compact and easy to walk on, but after a short stretch it turns into a path with soil full of stones and surfacing roots, which make the ascent difficult.



Along the way, there is a metal pole-beater about 3 metres long, on a section with rocky outcrops.



The length of the pole beater is approximately 3 metres.



The uneven terrain, with outcropping rocks, does not change for a fair distance, towards the valley there are posts stretched out to contain the bottom.



At the end of this part of the path we pass under a pylon for the transport of electricity.



We continue our walk on the terrain, which is fairly steep and still has some small outcropping stones.



On our left, towards the valley, we can admire the remains of the Great War trenches.



We now reach a first rest area.



On our left, towards the valley, a wooden shrine with a little Madonna appears.



We cross a section with an outcropping root, on fairly challenging terrain.



At the second rest area, in addition to the bench, there is a panel on the presence of geological finds in the area, also in Braille language.



At the end of the stretch in the forest, we come to a junction with a path descending from the mountain, cross it and continue straight on.



We walk along this short stretch on a slope.



he path ends as it joins the paved road that will take us to the Malga Cassinelli.



The final part of the trail is on mixed terrain of outcropping stones and earth.



We have arrived at the Malga Cassinelli, now the Rifugio Medici (1568 m).

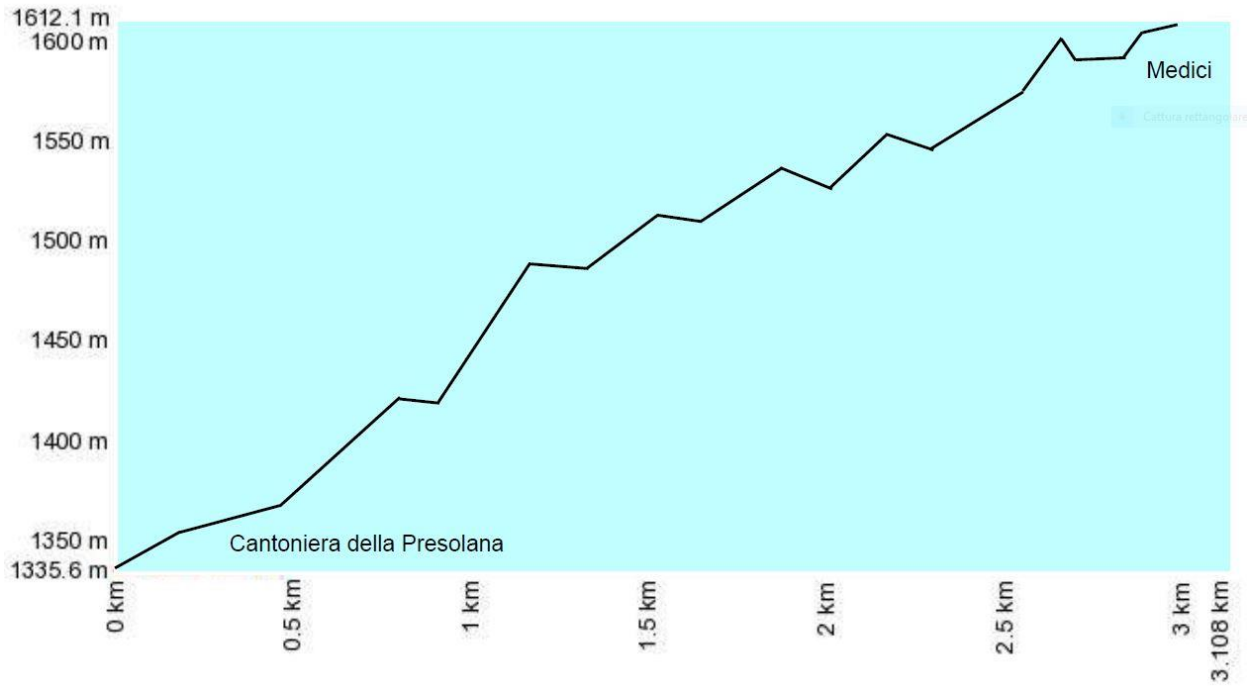


We have finally arrived at the refuge.



The hut is equipped with a bathroom for people with disabilities. We return to the valley following the outward route, or the road used by the manager to bring supplies to the hut.

Altimetria



Mappa del percorso

