

Cornabusa path

Road access from Bergamo:

Villa d'Almè, Strozza, Cepino
Km. 20

Start of excursion:

Via Antonio Stoppani, Cepino (500 m.)

Travelling time:

1^h 40' (a)

Height difference:

208 m.

Difficulties:

AT 

Recommended period:

All year round in the absence of snow

Water on route:

YES at the Shrine of Our Lady of Cornabusa

Rest stop:

NO

Information:

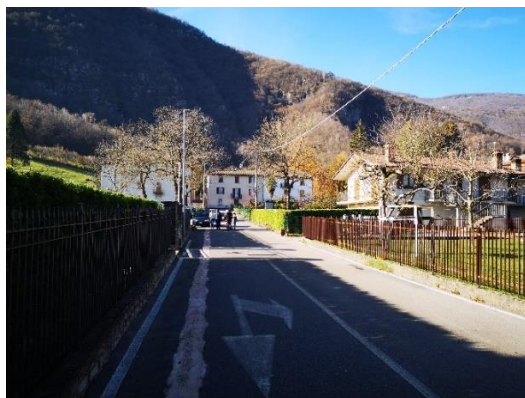
Municipality of Sant'Omobono Terme Tel: 035 851113
Shrine of Our Lady of Cornabusa Tel: 035 852483

Topographic map:

IGM F. ° 33 III N.O. Palazzago

Geographical Coordinates:

45,80354° N, 9,53439° E



After parking in Via Antonio Stoppani, Cepino, we walk in the direction of the Sanctuary of the Madonna della Cornabusa.



We take the first left into via Cacontaglio, reaching the end of the road, we turn left again.



Having crossed the small bridge over the Cepino stream, we turn right and follow the vertical C.A.I. signs.



We begin the ascent along the stream.



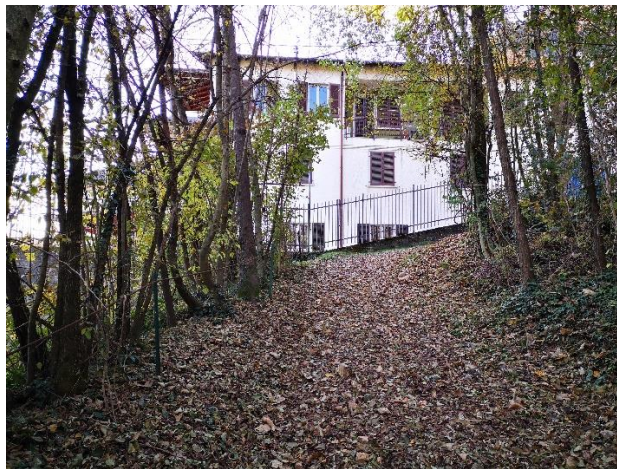
The signposts are clear and will accompany us for the entire route.



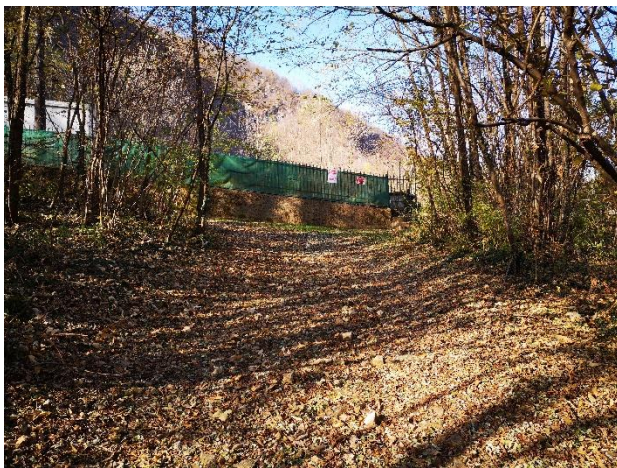
The ascent is pleasant and we follow the route with numerous 90° turns.



We enter sections of autumn forest.



We reach the house in front of us and turn right, continuing alongside the gate.



At the end of this uphill section, we turn left.



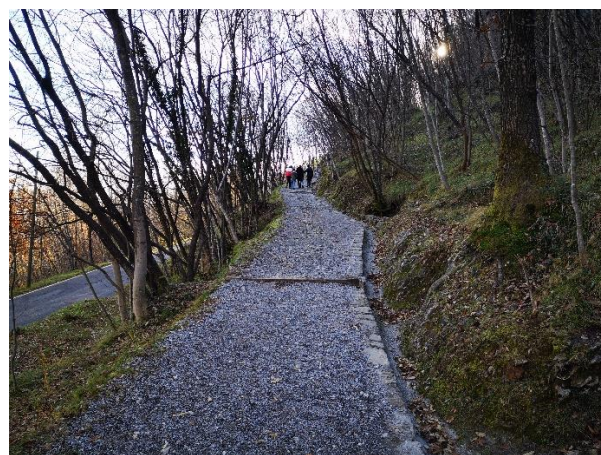
The path temporarily stops and we continue on the asphalt road for a short distance.



We turn right and after climbing these steps, we find the path to the sanctuary again.



At the end of the steps, there is a small rest area on the left.



The ground is now pebbled, but the slope is not too steep.



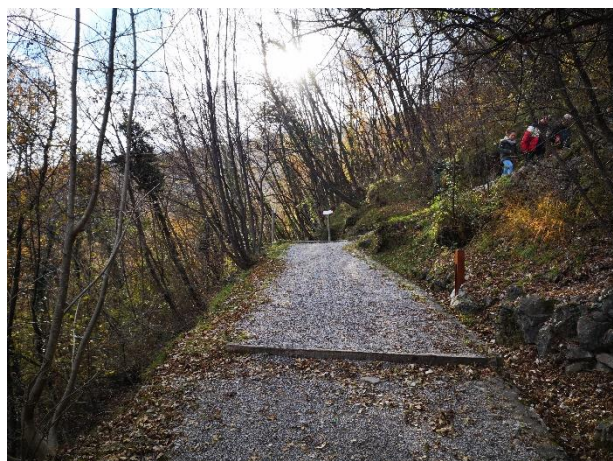
Below us on the left, we see the asphalt road, which we had previously walked along.



Now the steps become closer together, we continue by turning right.



We reach a small chapel and continue by turning left.



The path continues with fairly long stretches and turns that allow us to take a break on the way up.



We reach and pass another small chapel, turning right.



After the last stretch, we reach and pass the sanctuary on our left.

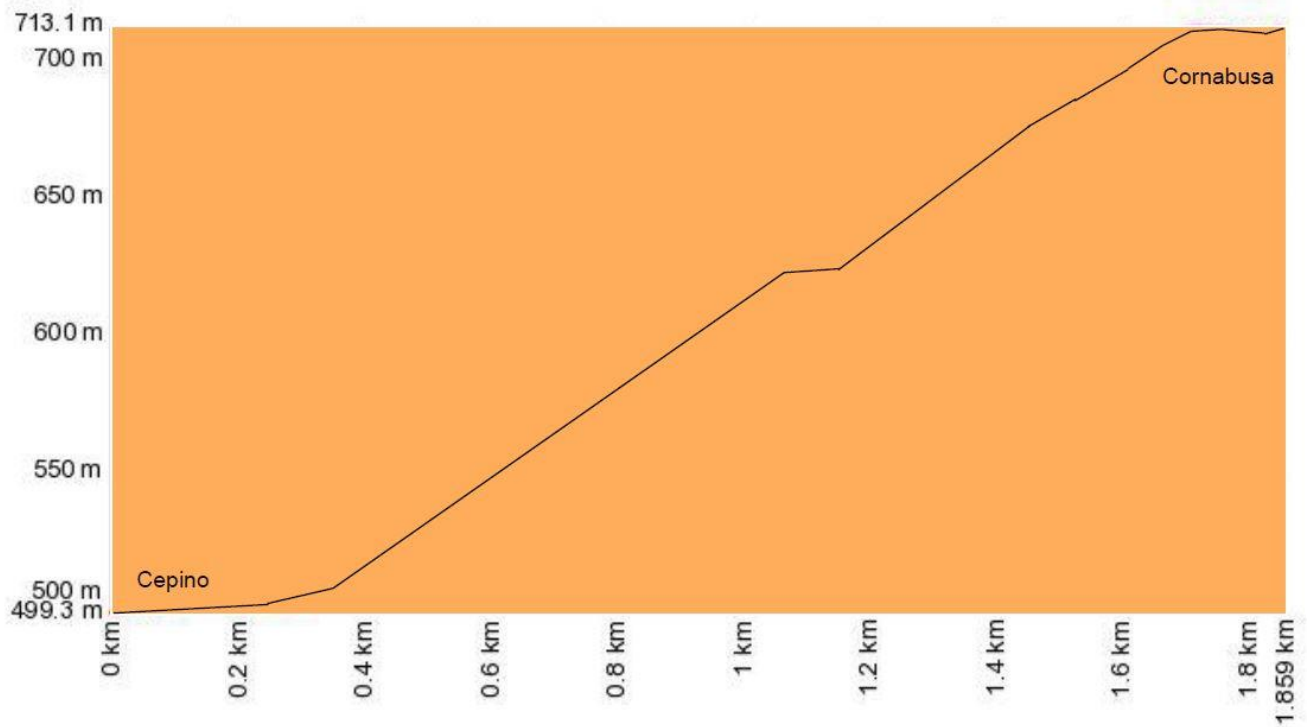


We continue on this flat, paved stretch towards the Grotta della Cornabusa.



Entriamo in rispettoso silenzio nella Grotta e proseguiamo verso l'altare. Il rientro potrà avvenire sul sentiero o per la strada asfaltata che ci riporteranno entrambi al punto di partenza.

Altimetria



Mappa del percorso