

# From the Sanctuary of Santa Maria del Lavello

## Road access from Bergamo:

Calolziocorte (Lecco), Sanctuary of Santa Maria del Lavello  
Km. 28

## Start of excursion:

Parking at the Sanctuary of Santa Maria del Lavello (247 m.)

## Travelling time:

2<sup>h</sup> 10' (a/r)

## Height difference:

Flat

## Difficulties:

AT 

## Recommended period:

All year round

## Water on the route:

YES

## Rest stop:

Lavello Restaurant, Tel: 0341 641088

## Information:

Municipality of Calolziocorte, Tel: 0341 639111

## Topographic map:

IGM F.° 33 III N.O. Palazzago

## Geographical coordinates:

45,472831° N, 9,255216° E

The Convent and Sanctuary of Santa Maria del Lavello (erroneously referred to as a monastery in common parlance) is a complex of premises arranged around two cloisters with an adjoining church, built at the turn of the 14th-15th century by the friars of the Order of the Servants of Mary. It is located in the locality of Lavello, in the municipality of Calolziocorte, in the province of Lecco, Lombardy. In 1944, the newly formed municipality of Calolziocorte approved the transfer of the church and two rooms of the Lavello convent complex to the parish of Calolzio. The damage caused by World War II bombing was repaired thanks to the generosity of the faithful, so that in 1948 the church reopened for worship. The church of Lavello is now assigned to the parish of Foppenico, while the sanctuary and convent have been reopened to the public thanks to the work of the Fondazione Monastero di Santa Maria del Lavello, established in 2003, which has advocated diligent and timely restoration work.



We park the car on the dirt ground in via Padri Serviti in Calolziocorte.



We walk towards the monastery, in the direction of the Adda river.



We reach the square in front of the monastery and turn right.



In front of us we see the entrance to the church of Lavello.



We walk along the cycle path between the Adda river and the monastery.



In front of us is a long tree-lined avenue alongside the cycle track.



To our left we glimpse a children's playground.



We reach, continuing on our way, a large free car park.



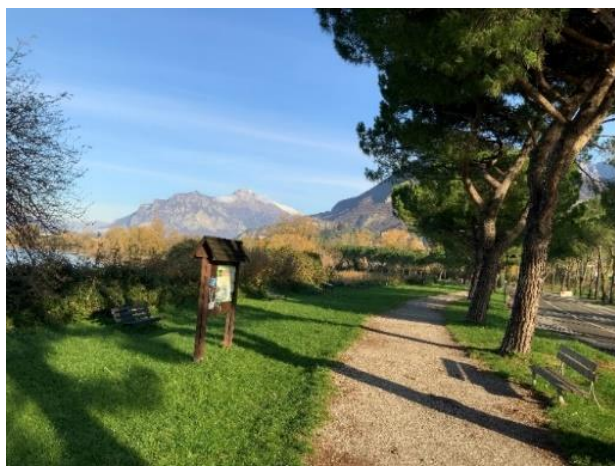
In the distance we see that the tree-lined avenue will soon come to an end.



We pass, continuing on the cycle path, a picnic area.



The Adda river now forms the Olginate lake.



Continuing on, we see the Lecco mountains in the background.



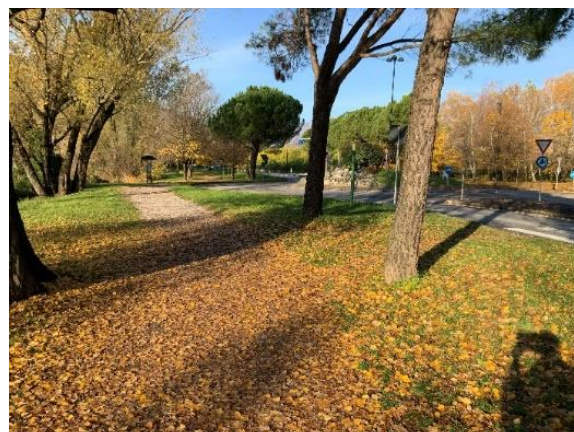
Among the trees, the castle of the Innominato appears to us.



The cycle path now runs parallel to a particularly busy street.



On our left we glimpse, among the trees, a small landing stage.



We pass, keeping to the cycle track, a roundabout on our right.



Now the path, at the fork in the road, turns sharply away from the road and enters the trees on the left.



At the base of the trees, leaves have gathered with the colours of autumn.



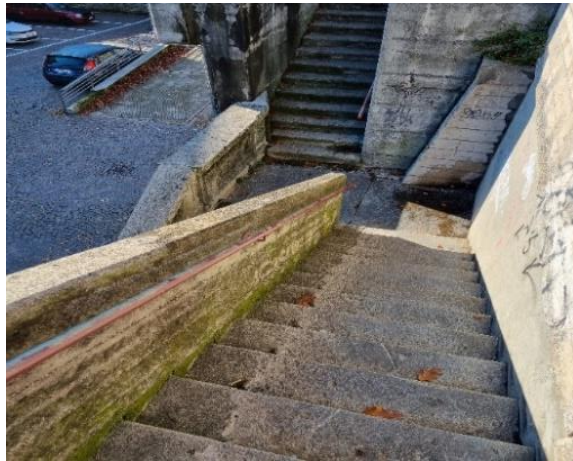
We see well-kept picnic areas to the right of the cycle path.



At the end of the path we see the bridge connecting Calolziocorte with Olginate, there the wheelchair path will end, we decide to continue anyway.



After ascending the bridge by a series of steps, we cross it in the space reserved for pedestrians.



At the end of the bridge we go down a series of steps.



We walk along the cycle path on this side of the lake.



The path is different from the one on the other side, it is more barren and less well maintained.



At the end of the path, before the railway bridge, we walk on a pedestrian and bicycle footbridge, which is very well maintained.



The bottom of the footbridge is made of wooden slats and it is very spacious.



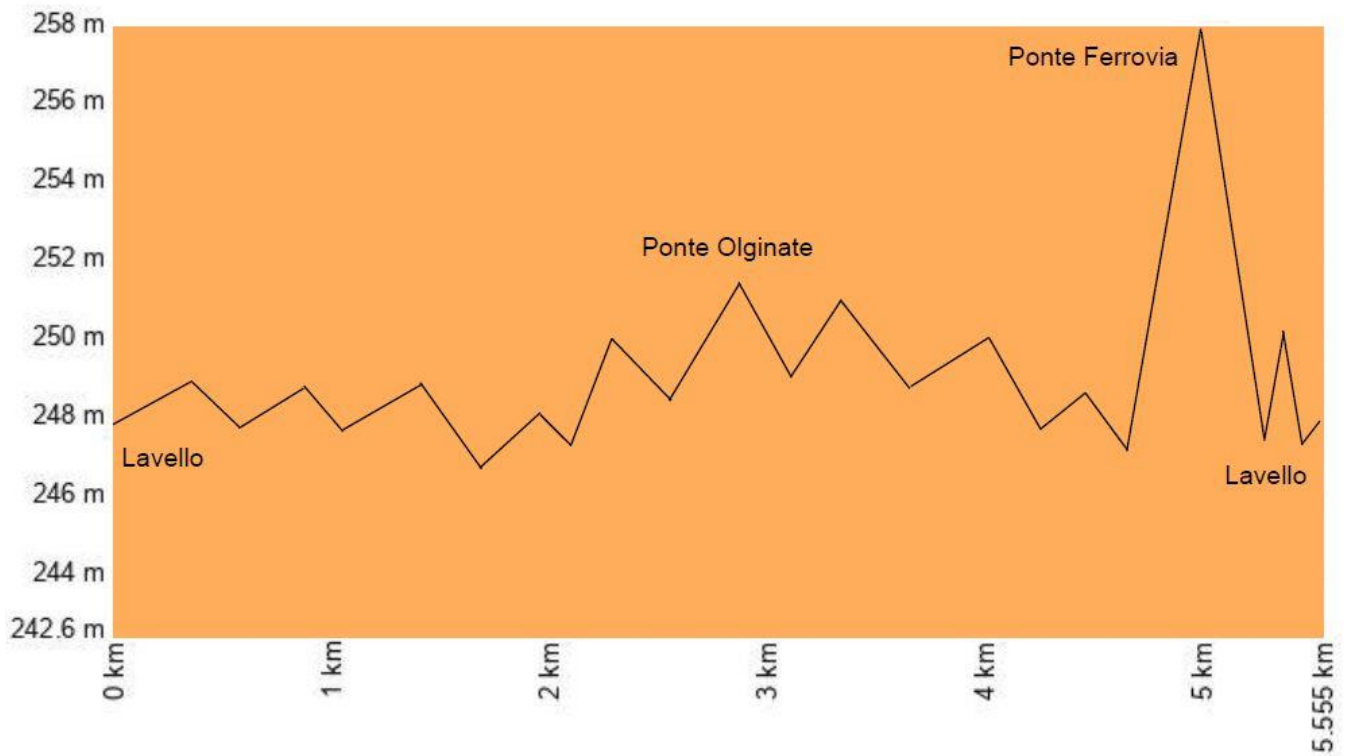
Halfway along the footbridge we pause to see the Adda river and the mountains above Lake Lecco.



At the end of the footbridge we descend, using a comfortable downhill stretch to reach the track that runs alongside the Adda. We walk up the course of the river until we reach the car park.



# Altimetria



# Mappa

