

# Cà di Zocc di Valpiana

## Road access from Bergamo:

Villa d'Almè, Zogno, Spino al Brembo, Serina, Valpiana  
Km. 33

## Start of excursion:

Cà di Zocc of Valpiana (1079 m.)

## Travelling time:

1<sup>h</sup> 20'(a/r)

## Height difference:

58 m.

## Difficulties:

AE 

Agro Pastoral Mountain Road

## Recommended period:

All year round in the absence of snow

## Water on route:

NO

## Rest stop:

NO

## Information:

Municipality of Serina Tel: 0345 66213

## Topographic map:

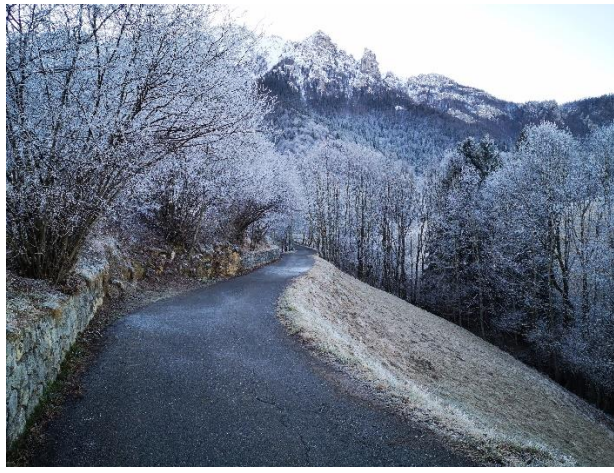
IGM F. ° 33 I S.O. Serina

## Geographical coordinates:

45,8842° N, 9,7452° E



We park the car on the left, in Via Famiglia Longaretti di Valpiana.



We set off in the direction of Cà di Zocc on the tarmac road.



When we reach the village of Cà di Zocc, we decide to walk the loop in a clockwise direction.



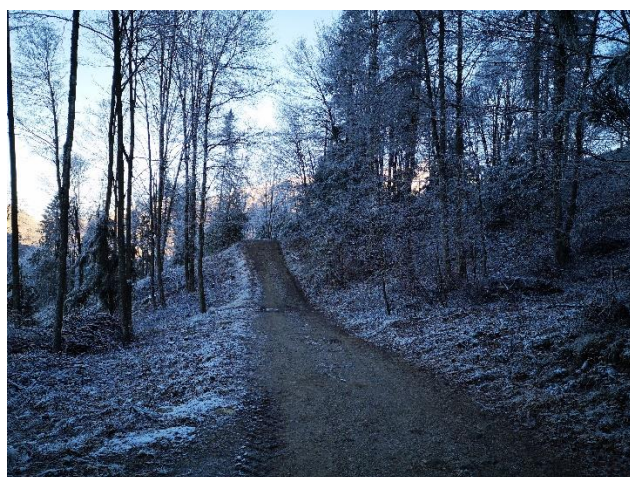
We begin the ascent by following the signposts, we are at 1079 m.



We pass a house on the left, with dogs making themselves heard and barking as they follow you.



The ground is dirt and pebbles, we are on an agro-sylvo-pastoral track, we follow the hairpin bend to the right.



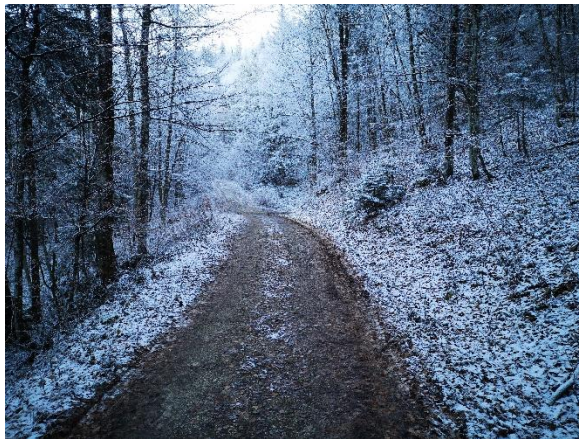
In front of us is a fairly steep but short climb.



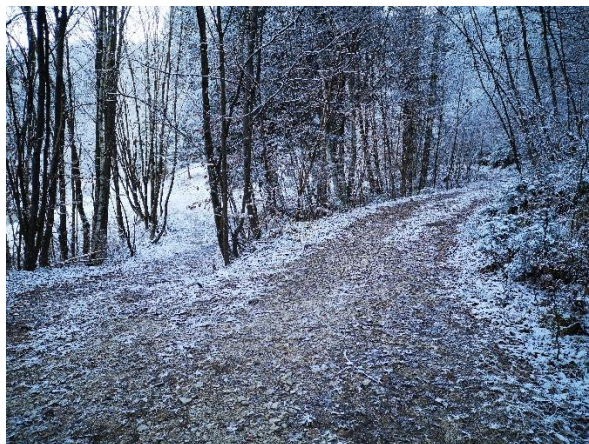
We begin to encounter the presence of galaverna, which gives the path a fairytale appearance.



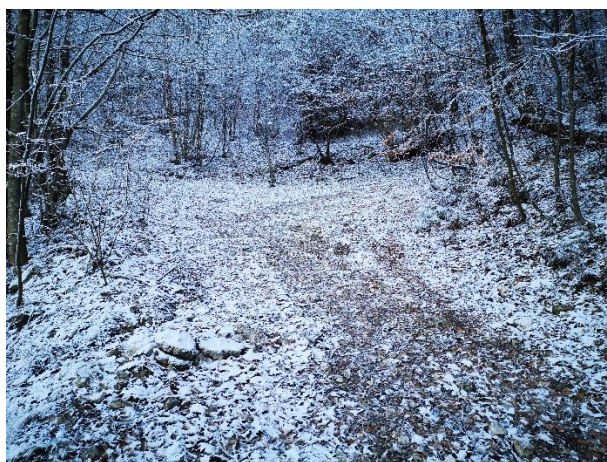
At the crossroads, we follow the signposts and continue to the left.



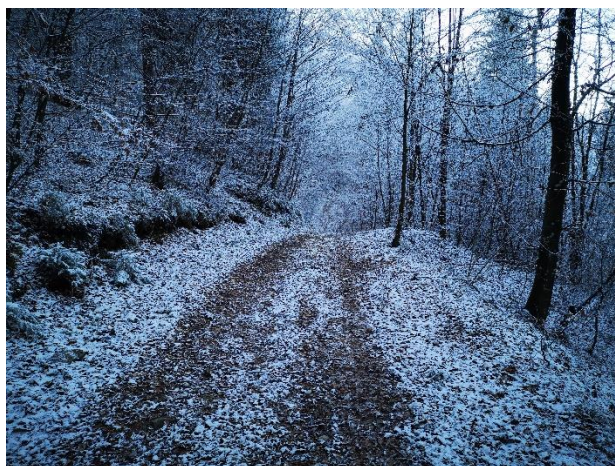
The route is easy and the walk continues smoothly on this ground.



We stay on the main route and keep to the right at this fork.



Now the presence of galaverna increases and we turn right.



A short climb encourages us on our way.



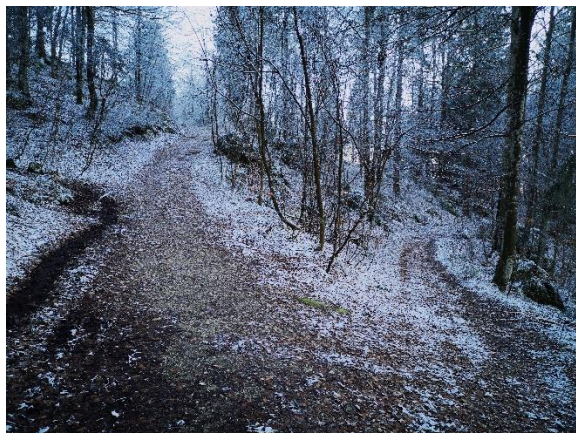
We reach a signpost and continue clockwise on the path.



On our left we reach a small shrine and pass it.



We reach another signpost, which confirms that we are on the right path.



At the crossroads we continue to the left slightly uphill.



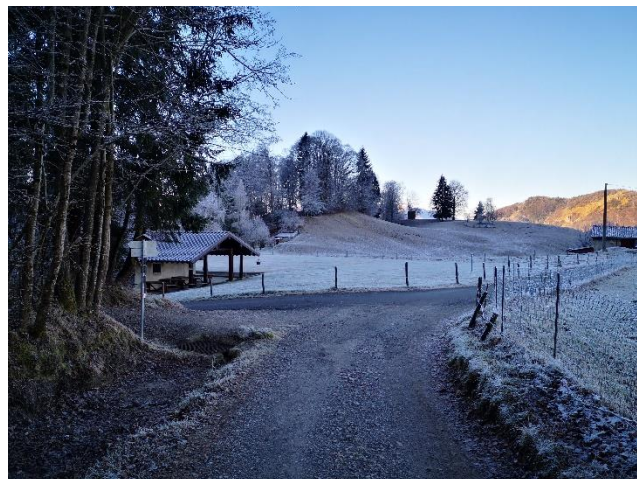
At the signpost, we follow the signs for the 'clockwise loop route'.



At the fork we decide, in view of the time, to continue right downhill.

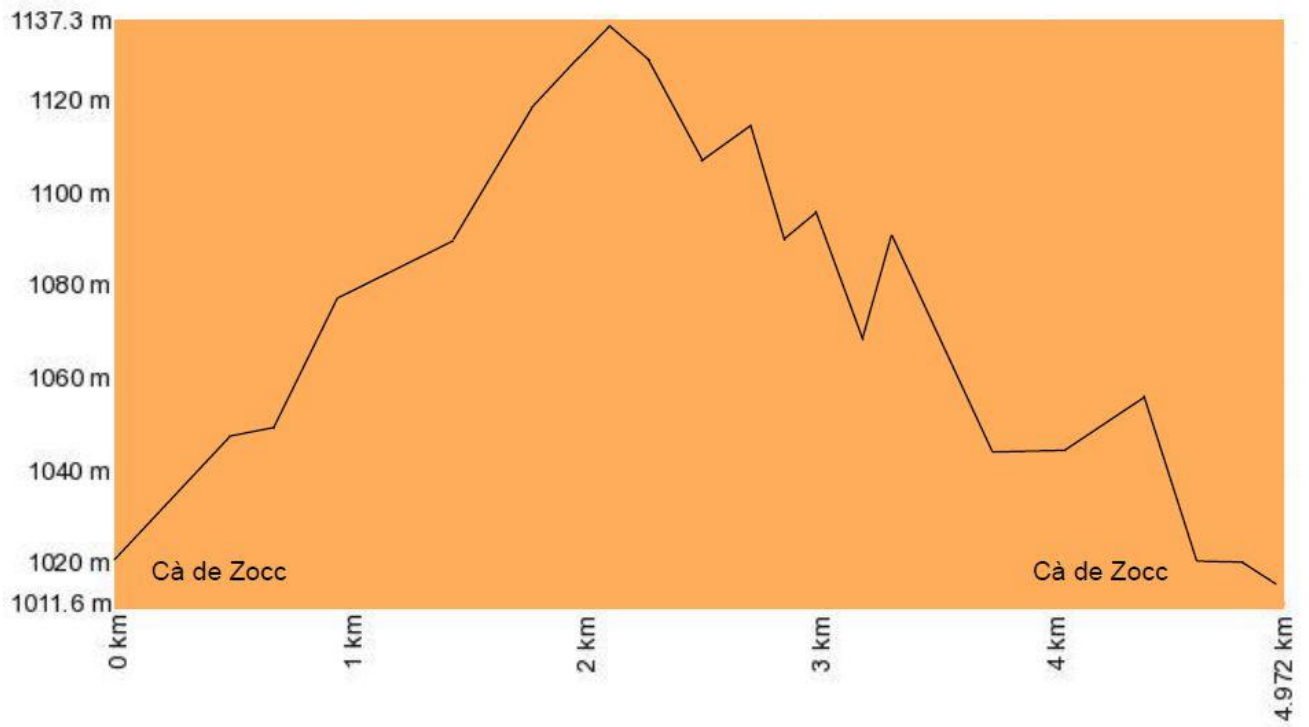


The signpost informs us that we are approaching the finish line.



After passing a house on the right, accompanied by the barking of dogs, we reach Cà dei Zocc.

# Altimetria



# Mappa del percorso

