

Fiumenero Valbondione cycle path

Road access from Bergamo:

Ponte Nossa, Ardesio, Fiumenero Parking
Km. 48

Start of excursion:

Via Dante car park, 15 Fiumenero (840 m.)

Travelling time:

2^h (a/r)

Height difference:

71 m.

Difficulties:

AT 

Bicycle and pedestrian path

Recommended period:

All year round in the absence of snow

Water on route:

YES at the start

Rest stop:

Stala di Mostacc Agritourism and Farm Tel: 0346 44113

Information:

Municipality of Valbondione Tel: 0346 44004

Tourist Office of Valbondione Tel: 034644665 Cell: 3204397505

Topographic map:

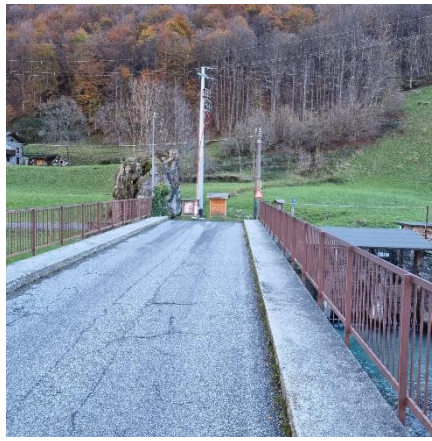
IGM F. ° 33 I N.E. Ardesio

Geographical coordinates:

46,02172° N, 9,95050° E



After reaching the Via Dante car park, 15 Fiumenero, we set off on the pedestrian cycle path, which will take us to Valbondione.



After crossing the bridge over the Serio river, we turn left.



We continue slightly uphill to the north.



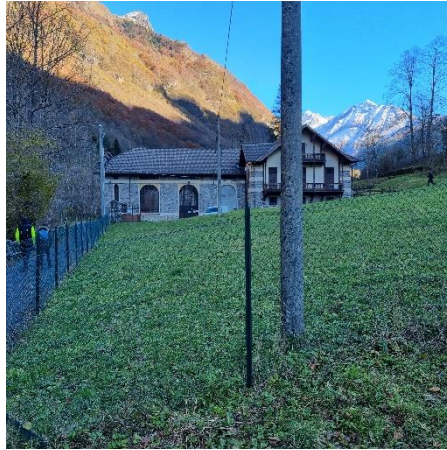
We reach the Agriturismo Stala di Mostacc where we fill up with water and continue along the cycle path.



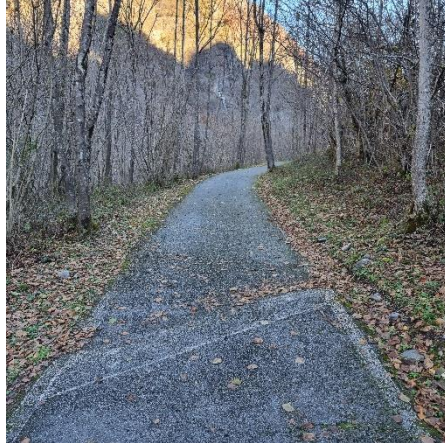
Autumn colours welcome us into the forest.



We reach and pass the first gate we encounter along the way.



After a short stretch we reach the Enel Gavazzo power station.



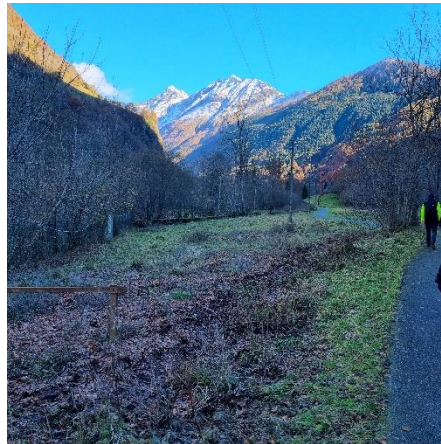
Along the way we encounter depressions made to allow rainwater to run off.



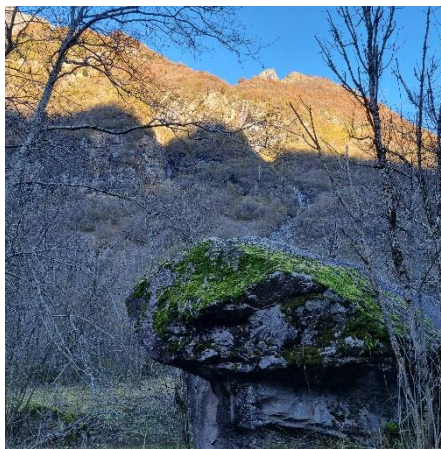
We meet and pass the first ford.



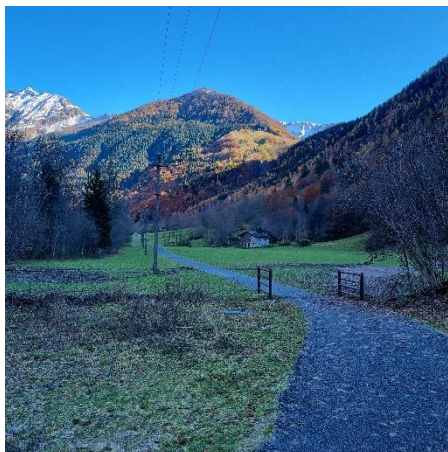
Amongst the foliage we catch a glimpse of the Dossi hydroelectric power station.



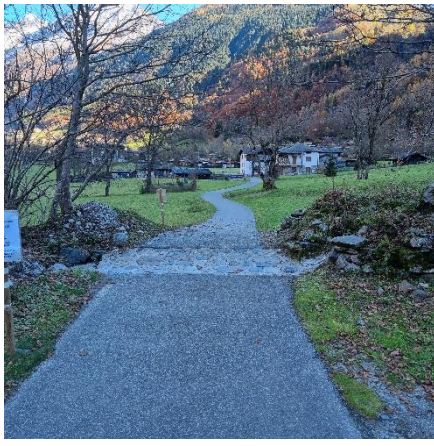
The track is now flat and the walk is easy.



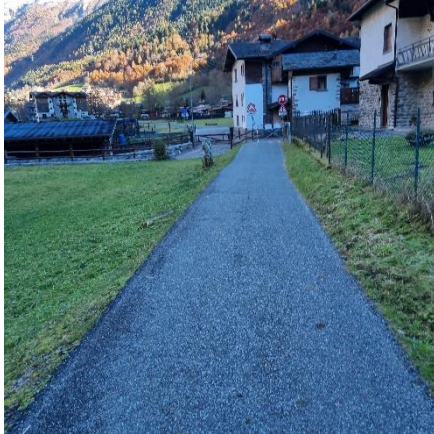
Looking to the left we see a small waterfall.



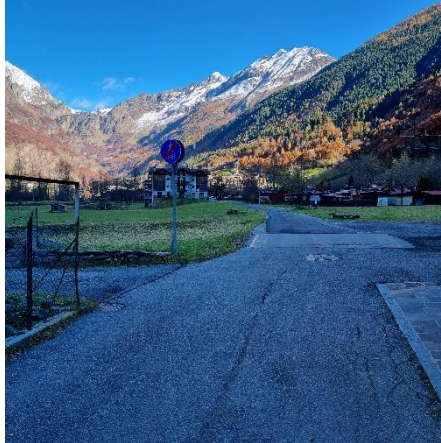
The route runs fast, we are about to arrive in Valbondione.



We cross the last ford and reach the first houses of Valbondione.



All we have to do is cross the barrier in front of us, which determines the end of the cycle/pedestrian path.

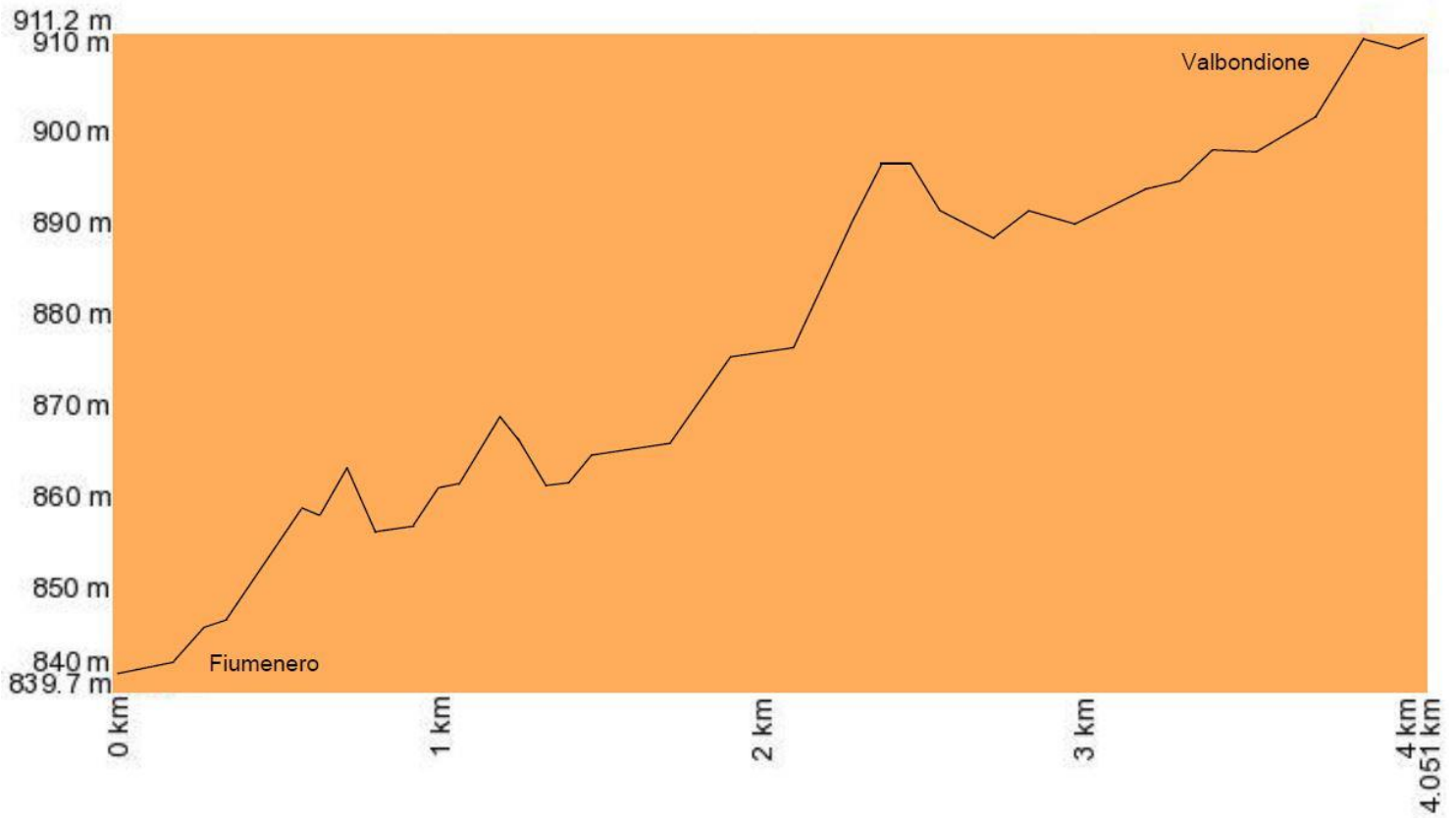


We reached the Valbondione campsite.



Our gaze turns to the beautiful basin in front of us.
After a short rest, we take the path back to our starting point.

Altimetria



Mappa del percorso

