

Bossico from locality Pila to Tre Santelle

Road access from Bergamo:

Sovere, valle Porlezza, Bossico, via Papa Giovanni XXIII, via Sette Colli, Via Locatelli, via San Fermo, Km. 45

Start of excursion:

Car parking of via San Fermo, località Pila di Bossico (917 m.)

Travelling time:

1^h 45' (a/r)

Height difference:

115 m.

Difficulties:

AE 

Mountain trail

Recommended period:

All year round in the absence of snow

Water on route:

YES at the start

Rest stop:

NO

Information:

Pro Loco Bossico Tel: 035 988365

Topographic map:

IGM F. ° 34 III N.O. Lovere

Geographical coordinates:

45.8326° N, 10.0419° E



We set off from the Bossico car park in Via San Fermo, and proceed in the direction of Pozza D'Aste la Chiesetta Caduti, following the signs on the tourist board.



The signpost informs us of the route to follow.



Before leaving the parking area, it is advisable to fill the appropriate containers with a good dose of water from the drinking fountain.



After passing the masonry shrine, we are about to reach the first fork in the road.



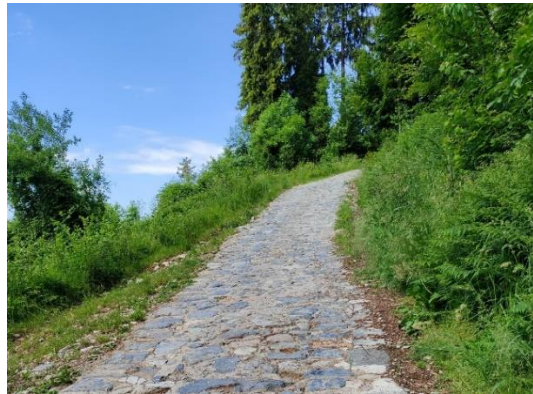
At this first fork we continue straight ahead, on the road that now changes its surface to fairly compact earth.



On reaching the second fork, we choose the left-hand downhill section, which keeps to the dirt road surface for now. We continue keeping to the left, following signs for Colle San Fermo.



At the ford, the dirt road ends and the cemented path begins, with an already demanding gradient from the first metres.



After the cemented section for about 700 metres, the section begins, always uphill, on paved ground for about 100 metres.



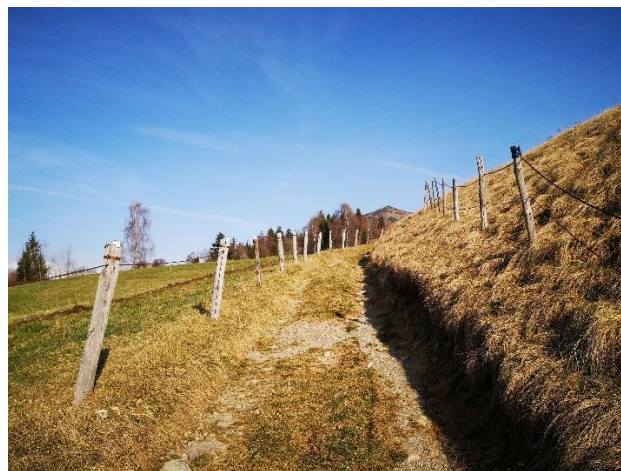
We are following the CAI 553 path.



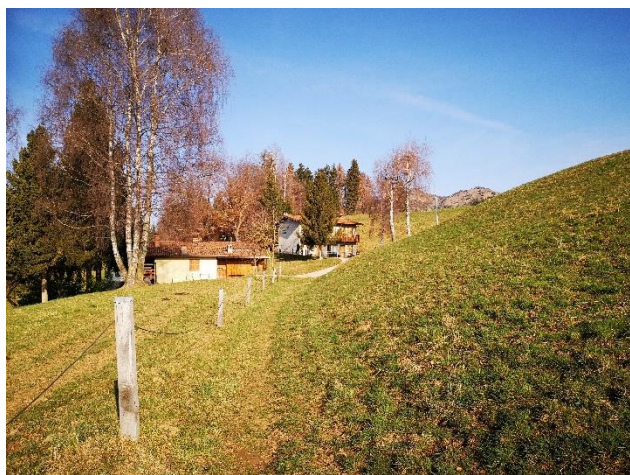
At the fork, we turn right slightly uphill on a stony surface.



At the next fork, we turn left and continue alongside a fence.



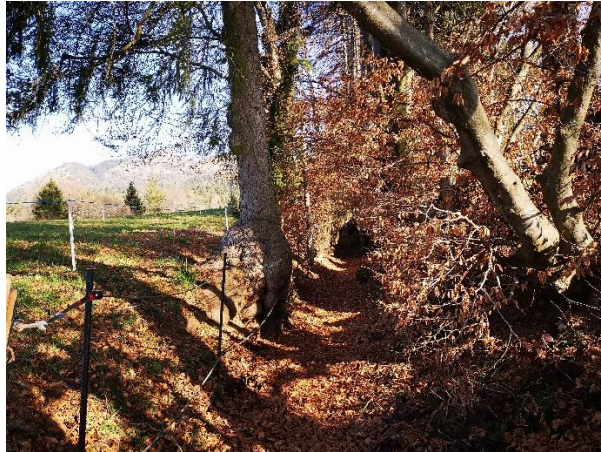
The terrain is now a mixture of earth and grass and the walk is pleasant.



We glimpse a farmhouse in the distance on the right.



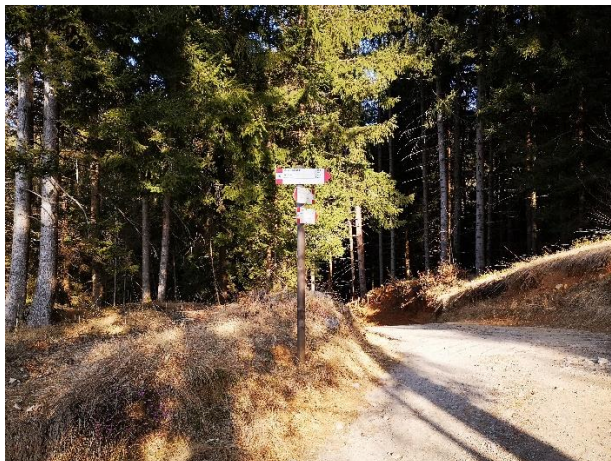
Having passed the house on our right, we enter a narrower path.



The ground is now compact and covered with leaves; we are on a trench between the trees.



We reach a small house on our left, which we pass and join another path.



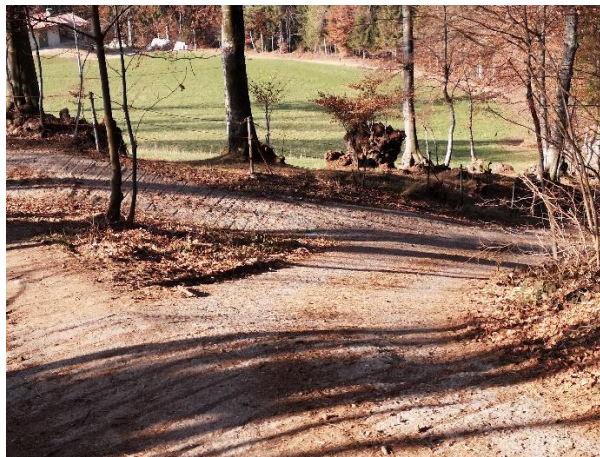
Having reached the signpost, we follow the signs for Tre Santelle.



This part of the descent is on cemented road with cross cuts to favour the flow of water.



The descent is continuous, with short stretches on false ground.



We have arrived in the vicinity of the Filisetti Mariateresa farm.



The path continues downhill on compact, cemented terrain.



Now the ground changes and becomes earth with grassy relief in the centre of the road.



We again enter a dense wood that is well maintained and well-kept.



At the fork we turn right and continue our descent.



We continue over mixed terrain and turn right again on a slight descent.



When we reach the signpost, we turn right at the next fork.



The descent now becomes more peaceful with compact terrain that is also cemented.



We reach a crossroads with different directions at the end of the paved section.



Below us is a small pond with small waterfalls.



To our left there are fountains with fresh water to quench our thirst.



To the side, we look at the map of the paths and set off to reach the Tre Santelle.



We have arrived at Tre Santelle, and sitting on the benches we admire the Borlezza valley.



We ascend in the direction of Pila and follow the signs on the signpost at the first crossroads.



Along the way, we admire the fantasy of nature, with the trees along the dirt road.



On our left we see a beautiful little house, surrounded by greenery.

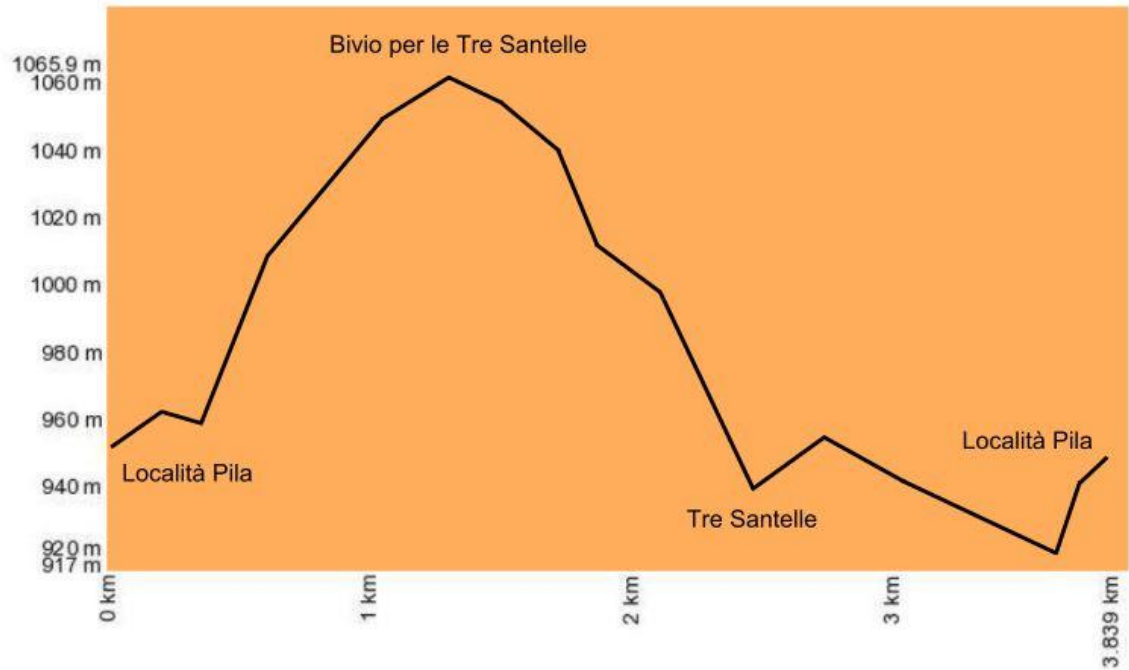


We are almost at the end of the route and admire another small house shining in the sun.



After the small ford we climb up a stretch of coarse paved road, with an S, to reach the locality of Pila.

Altimetry



Mappa del percorso

