

Loop route from Astino Monastery

Road access from Bergamo:

Bergamo, Longuelo, parcheggio di Astino, Bergamo
Km. 5

Start of excursion:

Astino parking, Bergamo (220 m.)


Travelling time:

1^h 30' (a/r)

Height difference:

100 m.

Difficulties:

AE 

Recommended period:

All year round, not after heavy rain

Water on the route:

YES

Rest stop:

Trattoria Lozza Tel: 035 252580

Informazioni:

Pro Loco of Bergamo Tel: 335 573876 Colli di Bergamo Park Tel: 035 4530400

Topographic map:

IGM F.° 33 III S.E. Bergamo

Geographical coordinates:

45,7078° N, 9,6402° E

We park the car at the pay car park in Astino or at the "Trattoria Lozza", which has a few free places.





We reach the "Cascina Mulino" along the lovely tree-lined avenue.



From here a path begins along a dirt road on compact and level ground.



We pass two scarecrows on the left that mark the access to cultivated fields.



Continuing on our right we see the "Allegrezza" farmstead.



At the end of the dirt track we cross a stream over a small bridge.



At the end of the ascent on the right we read on a board that we have walked along the path called "Laudato Sii".



Again on our right is the Church of the 'Madonna del Bosco'.



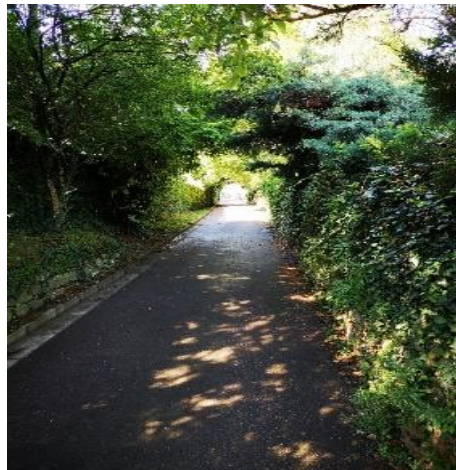
After crossing the tarmac road with a traffic light, we reach the fountain of running water and refuel in view of the walk ahead of us.



We walk along the "Castello Presati" street.



At the first fork, we continue keeping to the right.



We pass a stretch in the shade, thanks to the plants of the two neighbouring houses.



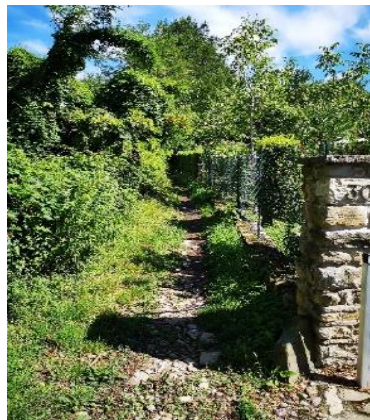
We reach the "Villa Sant'Anna" B&B, which resembles an ancient church, and turn downhill to the left.



Continuing along the main route, we pass the turnoff to the right for Via Della Rovere, reach a stop sign and turn right onto Via Del Coppo, taking care as cars approach.



After following a large renovated farmstead flanked by a small church, we turn right, taking path n° 806 of the Parco dei Colli, and walk along an uphill stretch of cobblestones.



At the first fork, we turn left and enter an uphill section on a narrow path over varied and uneven terrain, with large roots sticking out of the ground and large vineyards appearing on both sides.



It may happen along the way that we have to overcome obstacles, formed by trees that have fallen onto the path.



Along the ascent on the left we catch a glimpse of the Villa 'Bagnada'.



Having reached the top of our ascent, there is a bench on the left for a pleasant stop to admire the view, we then turn right and continue downhill on asphalt ground.



At the end of the descent on via Rabaiona we reach the "Madonna del Bosco" pass (312 m.).



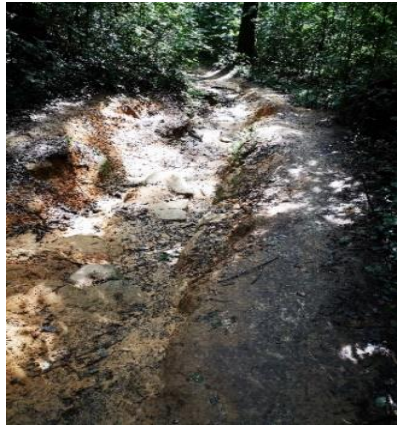
Having carefully crossed the road with good vehicular traffic, we reach a panel of the Parco dei Colli, which provides us with information on where we are.



From now on, we walk along the narrow path 921, on clay soil, with a surface that is affected by rain, and the flow of water.



Along the way, we can find channels in the ground as a result of rainwater.



We must be careful and walk on the sides of the depressions.



We now reach a compact section, first dirt track and then asphalt, which will accompany us to the end of our route.



At every change in the route, we can admire images of the Astino valley.



The Monastery of Astino now appears, of Vallombrosian origin, recently restored and now a venue for exhibitions and events.



We continue downhill until we reach a fountain of fresh, running water.



Turning left, we enter the Botanical Garden section of Astino, the valley of Biodiversity, which is well worth a visit, with its terraces full of numerous varieties of plants, looking beautiful and different in every season. In 2015, to coincide with the EXPO, Bergamo's botanical garden in the Upper City

(accessed on foot from the Scaletta di Colle Aperto), was enriched with this precious jewel, helping to bring people closer to the world of plants and to arouse respect for nature. To find out more, or for a virtual visit: www.ortobotanicodibergamo.it. After leaving the Botanical Garden, we continue downhill, skirting the Monastery on the left, and reach the point from where we started.

Altimetry



Route Map

