

# From the Forcella Sanctuary to Mount Misma

## Road access from Bergamo:

Pradalunga (Valle Seriana), La Forcella, locality the "Sbardelada".  
Km. 12

## Start of excursion:

The "Sbardelada" (680 m.)

## Travelling time:

3<sup>h</sup> (a/r)

## Height difference:

482 m.

## Difficulties:

AEE 

## Recommended period:

All year round in dry soil

## Water on the route:

NO

## Rest stop:

Trattoria-pizzeria La Forcella; Tel: 035 768215. Municipal Park "La Pratolina" (Coop. Calimero).

## Information:

La "Pratolina" for Baita reservations: Tel. 035 74355

## Topographic map:

IGM F. ° 33 II S.O. Alzano Lombardo

## Geographical coordinates:

45,7431° N, 9,7999° E

A beautiful walk along paths that have connected the Seriana Valley with the Cavallina Valley since ancient times. The route runs through natural, evocative environments, but also interesting for the religious and historical testimonies. From the Pradalunga square, take the carriage road that climbs to the Sanctuary of the Madonna della Forcella (626 m).



The Sanctuary, built at the beginning of the 17th century, was enlarged to a design by architect Elia Fornoni in the years 1910 - 1915. More recent is the construction of the Casa del Pellegrino (Pilgrim's House) and the adjoining restaurant. After the Sanctuary, the carriage road continues for about 800 m. to "La Sbardelada" where, just before a barrier, you can park.



This is a vast area surrounded by 'Roére', the dumps from the numerous Cote stone quarries in the area. The appropriately finished Cote stones were, and in some cases still are, used for sharpening cutting tools; only a few decades ago did the quarrying activity, practised since antiquity, cease.



Following the road that ascends asphalted and then dirt road, we reach the locality of "Pratadòlt" (770 m), a meadow widening where chestnut trees grow.



After the bend to the right, the route winds its way over wide, compact terrain and the slope is less steep.



The ascent resumes to the meadowy widening that we glimpse between the trees.



We reach a board informing us that we have reached a particularly pleasant and well-maintained rest area.



To the right of a house is the 'La Pratolina' farmstead, a beautiful building of 17th-century origin.

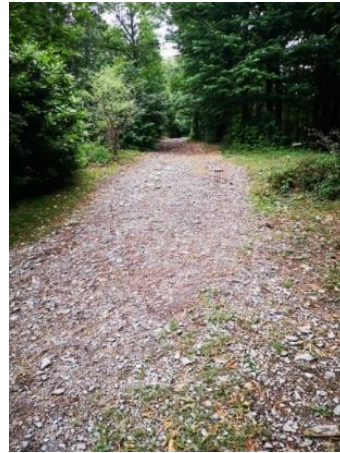


Resuming the ascent, a wooden crucifix appears on our right.





A signpost indicates the direction to follow.



After a second barrier, we continue along the dirt road for about 500 m. to the locality "Mesòlt" (778 m., 45' from the car park).



At the fork, we continue to the right on C.A.I. path 539.



At the next fork, an indicator panel appears on our left; here we follow the path CAI 539, up to Mount Misma.



Here the route narrows into a path with a good gradient and some stretches where care must be taken.



The path is narrow with a good gradient, and runs through the forest with several hairpin bends, which make the ascent easier.



Along the way, a fence appears on the left, which will follow us for a fair distance.



After passing a fork with a path that climbs to our right, the fence ends and we continue on a slight incline.





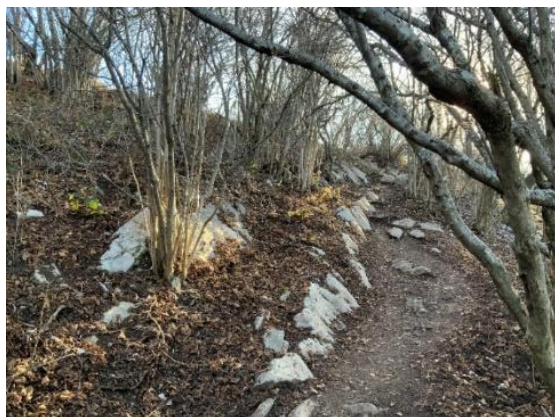
We are once again on path C.A.I. 539, the section now flattens out slightly and at the bottom we see a small white house.



We reach the small house and an indication appears on the left-hand edge confirming that we are on the right path.



After going round the small house on the left at a small turning on the left, we continue until we reach a CAI sign inviting us to turn right.



We continue our ascent, changing direction several times until we reach the end of the forest.



We find ourselves before a meadowy stretch, devoid of plants, and we continue our ascent.



We finally reach the mountain's anticima and continue in the direction of the summit.



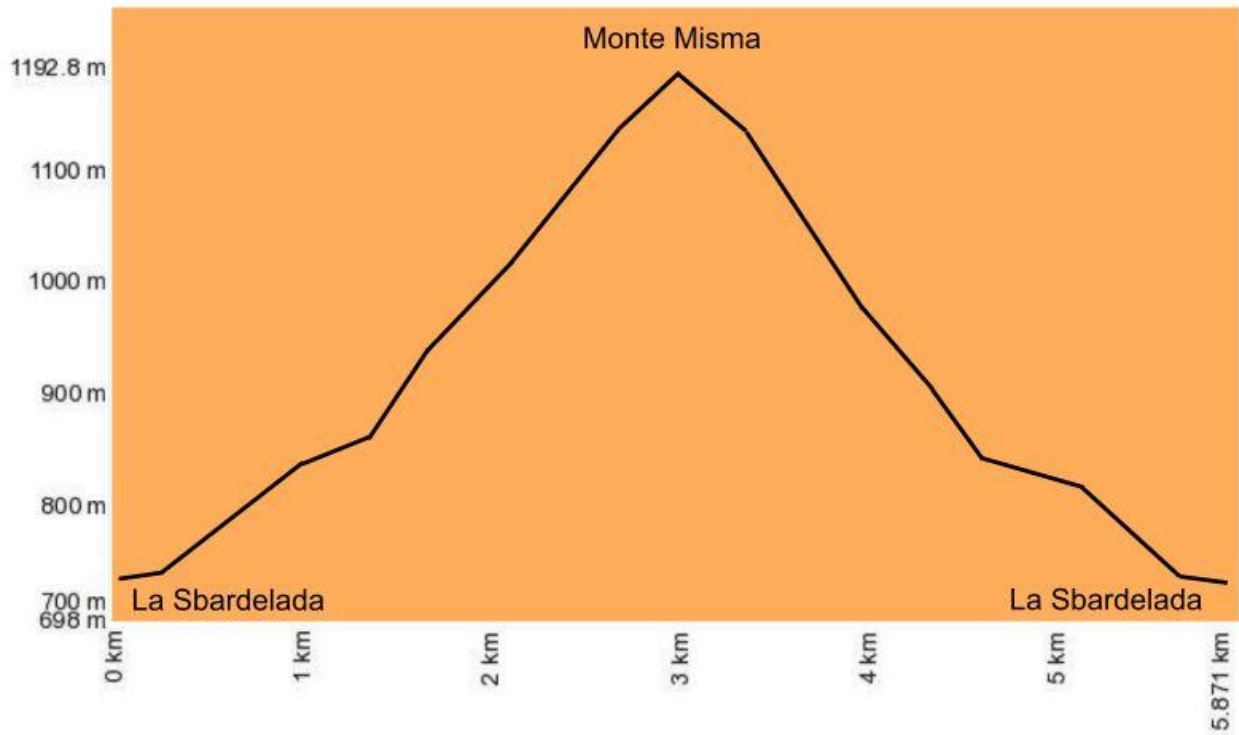
We have finally reached the summit of Mount Misma 1193 m. with indications of the surrounding mountains.



We stand in front of the characteristic cross and ring the bell for a short reminiscence. After a short break, we take the return route following the outward journey.



# Altimetry



# Route Map

