

La Merletta Cycle and Pedestrian Path

Road access from Bergamo:

Ponteranica, Petosino, Almè, via Ponte della Regina
Km. 8

Start of excursion:

Via Ponte della Regina, Almè (294 m.)

Travelling time:

1^h 50' (a/r)

Height difference:

50 m.

Difficulties:

AT 

Cycle and Pedestrian Path

Recommended period:

All year round

Water on route:

YES at Villa d'Almè

Rest stop:

NO

Information:

Municipality of Almè Tel: 035 541057
Municipality of Villa d'Almè Tel: 035 6321111

Topographic map:

IGM F. ° 33 III S.E. Bergamo

Geographical coordinates:

45,7398° N, 9,6125° E



After parking in Via Ponte della Regina, we walk to the Merletta.



When we reach the Santella, we turn left and continue on our way.



We pass the barrier on a sufficiently wide asphalt road.



Now the ground becomes cemented and narrows slightly, but the path is easy.



At the fork, we turn sharply right onto a downhill road.



We begin to encounter hairpin bends, which lead us towards a canal, parallel to the Brembo.



We continue our descent on this compact cobbled road.



At the end of the descent, we turn right and continue in a northerly direction.



Along the way we come across a small source of fresh, but undrinkable water.



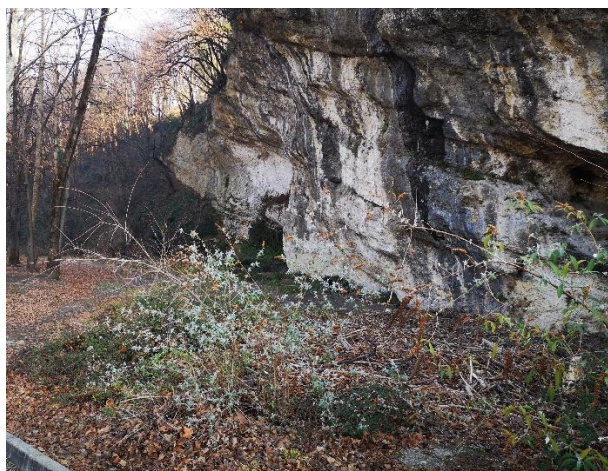
We turn left and cross the gully via a small metal bridge, then turn right.



The ground is now compacted loam; at the end of the straight stretch we turn right over a small bridge.



After the small bridge we turn left and continue northwards.



On our right we see a rock face used for rock climbing.



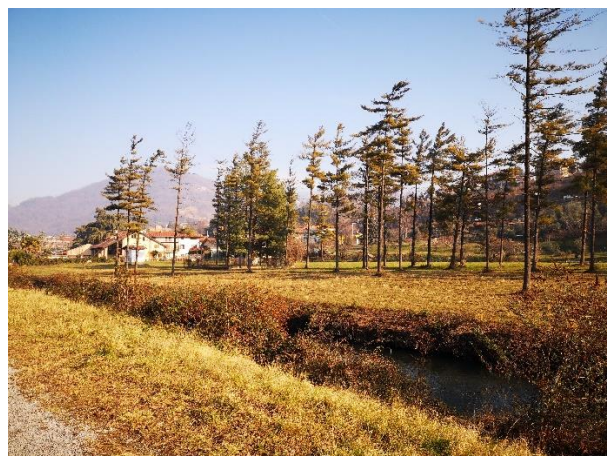
Continuing along the path we reach the ruins of an ancient bridge over the Brembo river.



The panel informs us about the history of the bridge destroyed by an ancient flood.



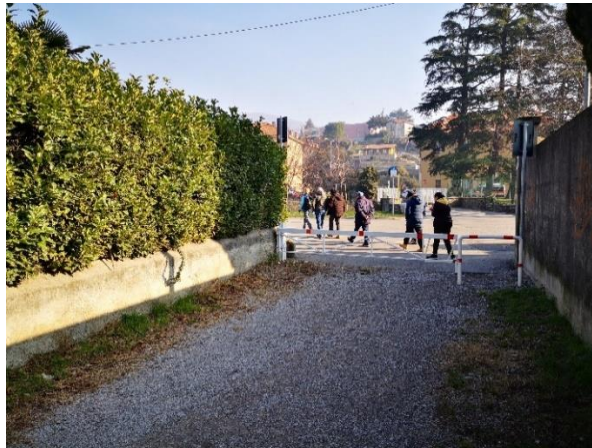
The ground of fine cobblestones does not impede the walk, the path narrows slightly.



Now the green space, illuminated by the sun, welcomes us and accompanies us for a stretch.



On the left we encounter a bench with a view of the Madonna del Castello Sanctuary.



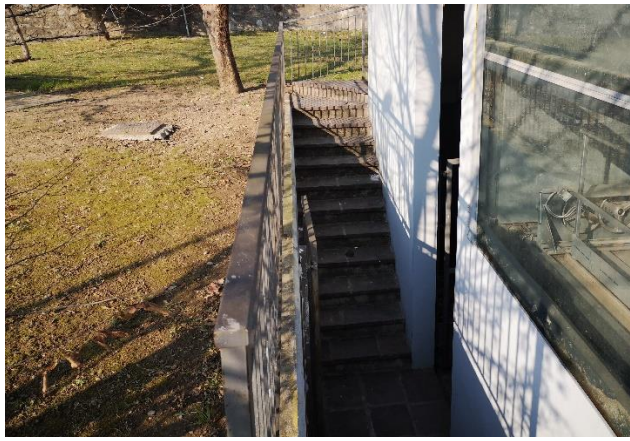
We reach the end of the cobbled path, pass the barrier and turn left.



We stop for a brief rest in a playground; we are now in Villa d'Almè.



We continue on our way, crossing a small bridge and in front of us we see the road subway.



You can go down the stairs, or use the lift to reach the street level.

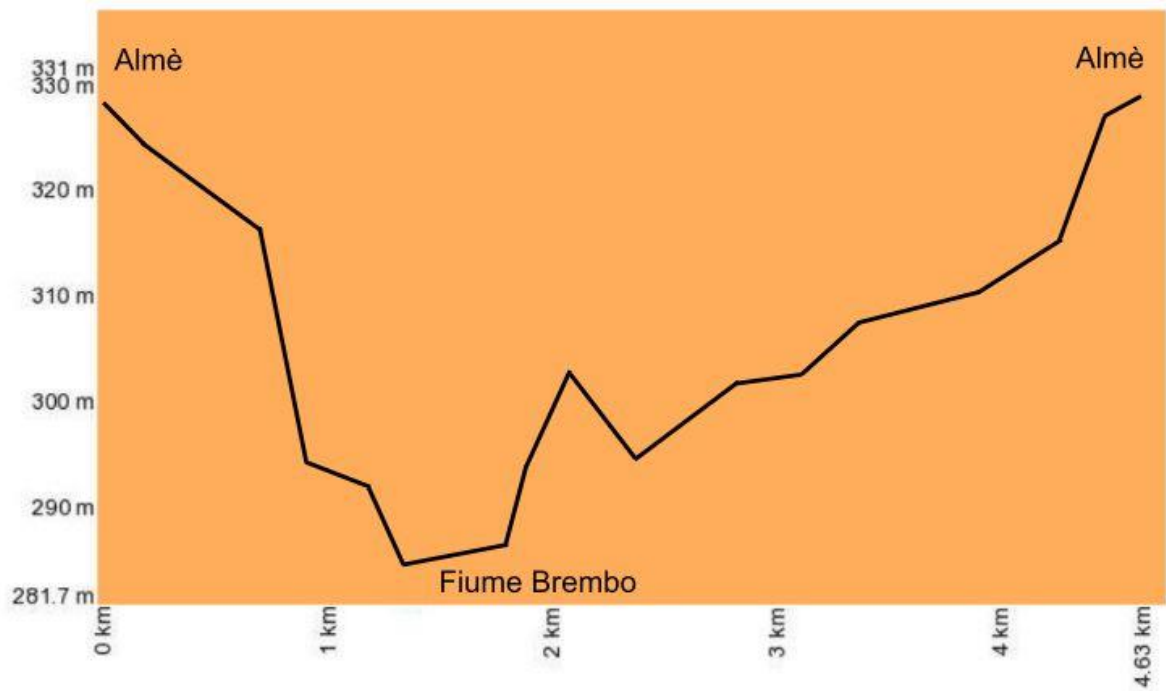


We turn right onto Via Fratelli Calvi and continue slightly uphill.



We turn right and, having passed the barrier, continue along the pedestrian cycle track towards Almè.

Altimetry



Mappa del percorso

