

# From Lonno to the Cross of Valtrusa

## Road access from Bergamo:

Alzano Lombardo, Nembro, Lonno  
Km. 14

## Start of excursion:

Car park of via Moroni, Lonno (721 m.)

## Travelling time:

1<sup>h</sup> 20'(a/r)

## Height difference:

216 m.

## Difficulties:

AE  

Mountain trail

## Recommended period:

All year round in the absence of snow

## Water on route:

NO

## Rest stop:

Lonno restaurant "Sant'Antonio" Tel: 035 514880

## Information:

Municipality of Nembro Tel: 035 471311

## Topographic map:

IGM F. ° 33 II N.O. Albino

## Geographical coordinates:

45,7577° N, 9,7330° E



We park our car in the car park in Via Moroni in Lonno.



From the car park we turn right and climb the cobbled steps.



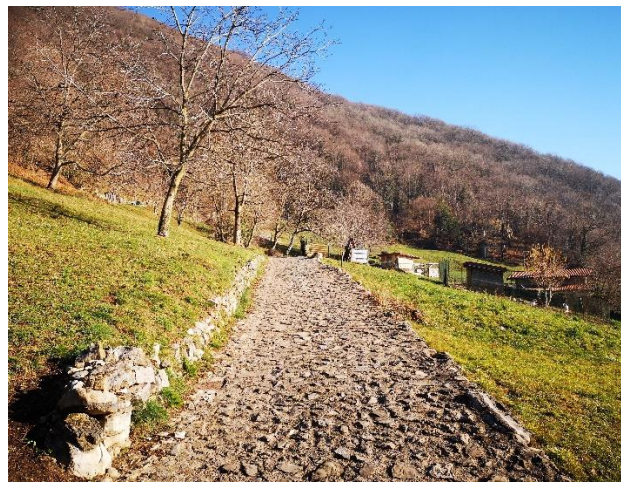
At the end of the uphill section we turn left.



We continue until we reach a crossroads where we turn right.



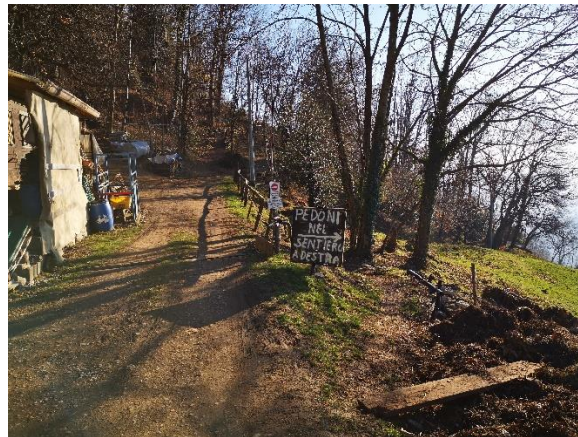
We ascend this stretch of cobblestones and coarse cobblestones.



The surface is now very uneven and does not make the climb any easier.



For a short distance on either side of the path there are two paved parts.



The sign invites us to follow the path to the right and the barking of the dogs convinces us.



The path is now a mountain path with small pebbles.



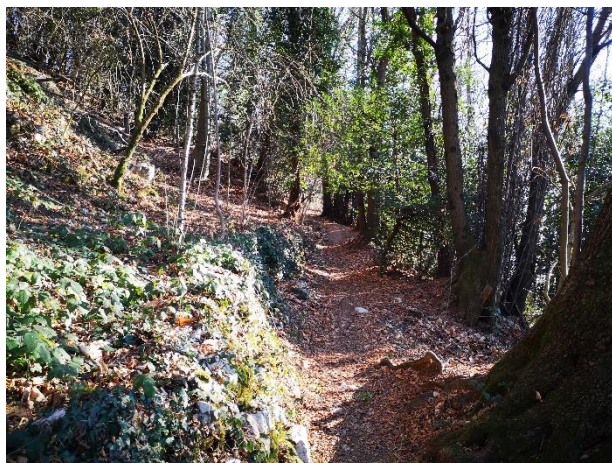
The ground is now compact and the ascent is made easier.



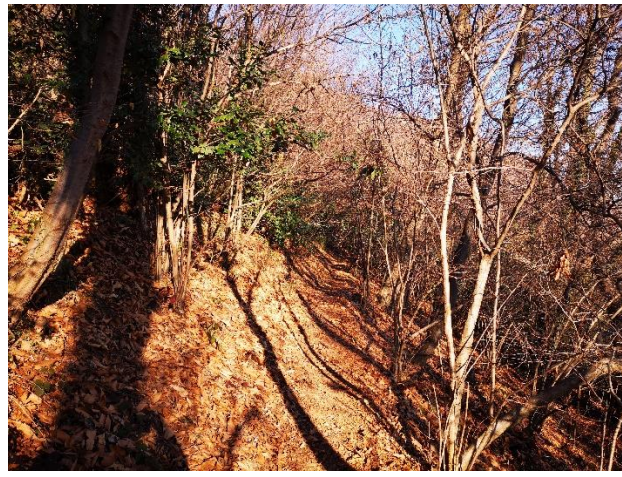
We reach and pass a section with large stones.



This section is still characterised by stones and surfacing roots.



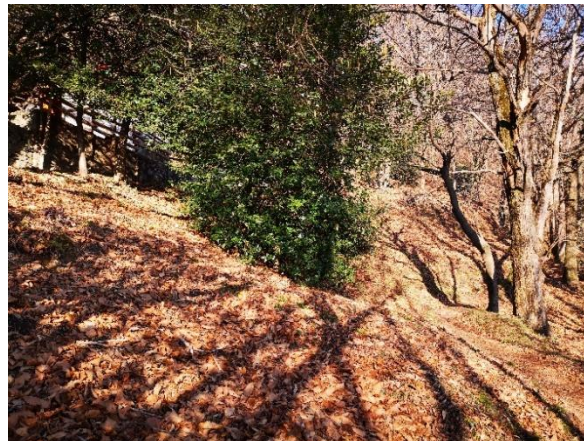
The ground improves and the ascent is more pleasant.



We are in a section of false-flat and the slope is not excessive.



The path, typical of the mountains, narrows and we climb at a good pace.



We pass a small building on our left.



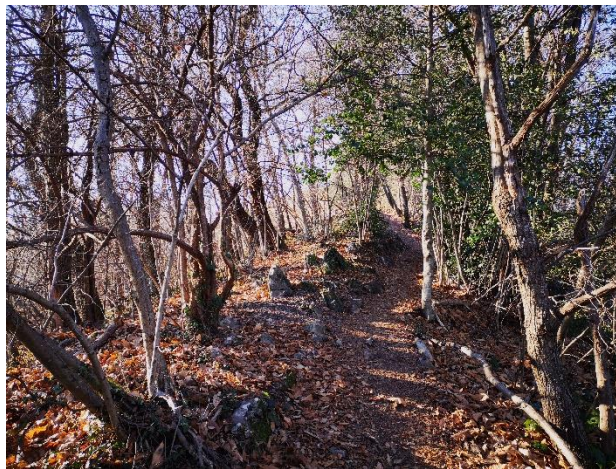
At the crossroads, we turn left and ascend the final stretch, which will lead us to our destination.



The terrain is compact, with small stones outcropping.



We reach and easily overcome a section with outcropping roots.



We are in the final stretch and among the trees we spot our destination.



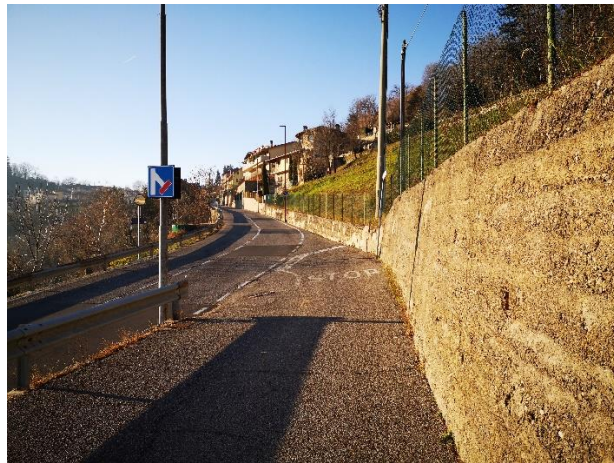
The signpost confirms that we have arrived at the Croce di Valtrusa.



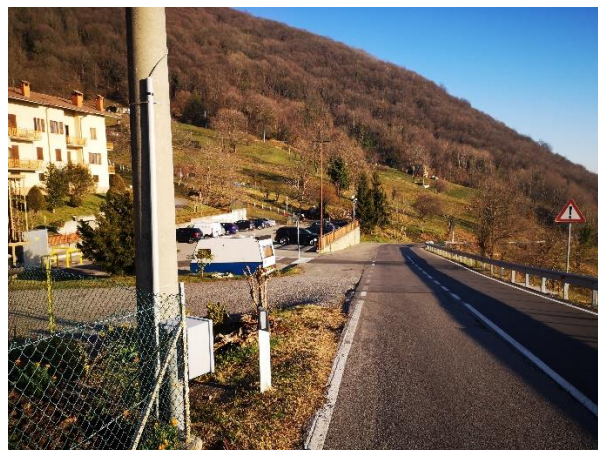
We pause for a while under the cross, then resume our walk, following the route of the outward journey.



Reaching the crossroads of the initial stretch, after the steps, we decide to continue straight ahead.

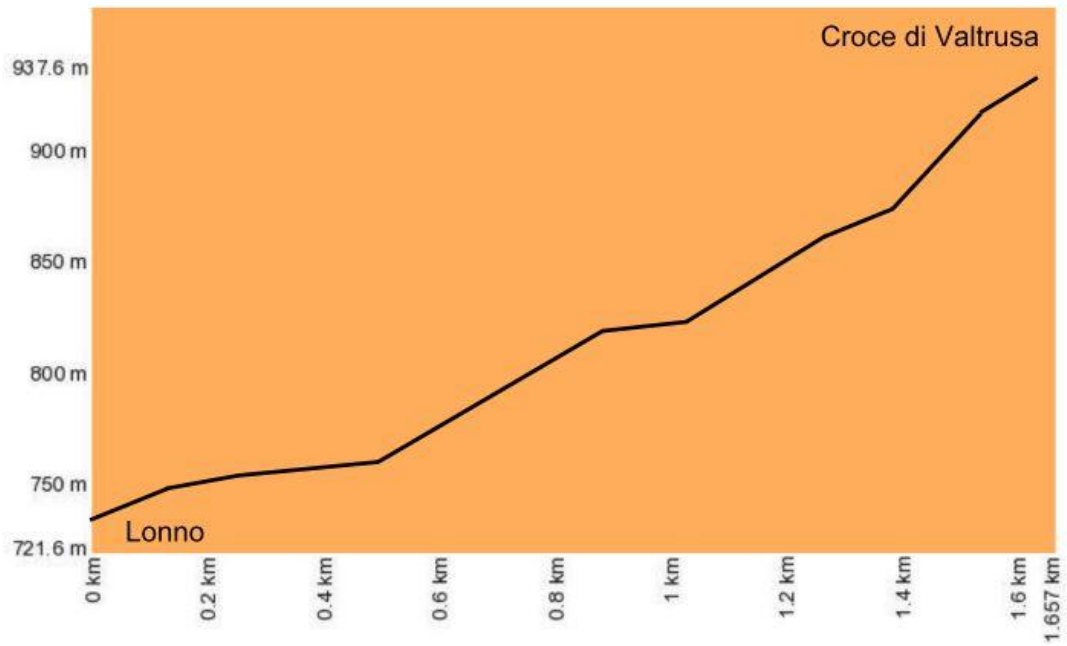


Arriving at the end of the road, we turn left, paying attention to vehicular traffic.



We reach, turning left, the car park from which we started.

# Altimetry



# Route Map

