

# From Sant'Antonio Abbandonato to the Zucco refuge (G.E.S.P.)

## Road access from Bergamo:

Zogno (Valle Brembana), Sant'Antonio Abbandonato.  
Km. 25

## Start of excursion:

Near Il Cacciatore bar, Sant'Antonio Abbandonato (987 m.)

## Travelling time:

2<sup>h</sup> 20' (a/r)

## Height difference:

160 m.

## Difficulties:

AE 

## Recommended period:

April to October

## Water on the route:

YES

## Rest stop:

Rifugio Zucco, Gruppo Escursionisti S. Pellegrino Terme (G.E.S.P.)

## Informationi:

President (G.E.S.P.) Tel: 0345-23050

## Topographic map:

IGM F. ° 33 III N.E. Zogno

## Geographical coordinates:

45,8087° N, 9,6355° E

Today, Sant'Antonio Abbandonato can be reached comfortably by car from Zogno as well as from Brembilla, but at one time, when the small hamlet of Brembilla was only connected to the valley floor by mule tracks, the people who lived up there, almost a thousand metres up on the ridge between the Valle Brembana and the Valle Brembilla, could also feel isolated, abandoned with their Saint. Climbing up from Zogno, when, after the last few hairpin bends, the beautiful parish church appears with the few houses lined up on the panoramic ridge, one has the vivid perception of having arrived in a peaceful and serene place. Having parked the cars on the widening that lies just after the bar "Il Cacciatore", we turn back for about 60 metres, where the mule track that climbs to the houses of Prisa Bassa (1023 m) starts.



From this point, the path, which develops on the Brembano side, is marked with yellow marks. In about 15' you will reach the above-mentioned houses (you can refuel water).



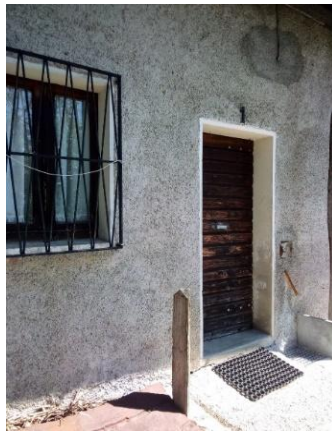
Still following the yellow marks indicating where to pass, you arrive at a small house near which there is a drinking trough.



Continue following the signs indicating the direction to the hut.



Go left, following the path that goes slightly uphill into the beech and oak woods, until you reach a fork in the road. Here, turn right to cross, first on the level and then uphill, a small valley; passing near a former hunting lodge, now a small refuge of the Zogno C.A.I., you will reach the Foppi farmstead.



Having gone around the farmstead, the path, fenced in by hedges, climbs the meadowy slope; on the left, a small chapel painted pink attracts attention.



We pass by a farmhouse.



We now enter the forest.



We now reach a signpost that points us in the direction of the hut, following CAI 505 path.



Now the environment changes dramatically: from the shady forest we enter a small nature park with tall beech trees, which grow between fantastic rock formations and well-tended green meadows.

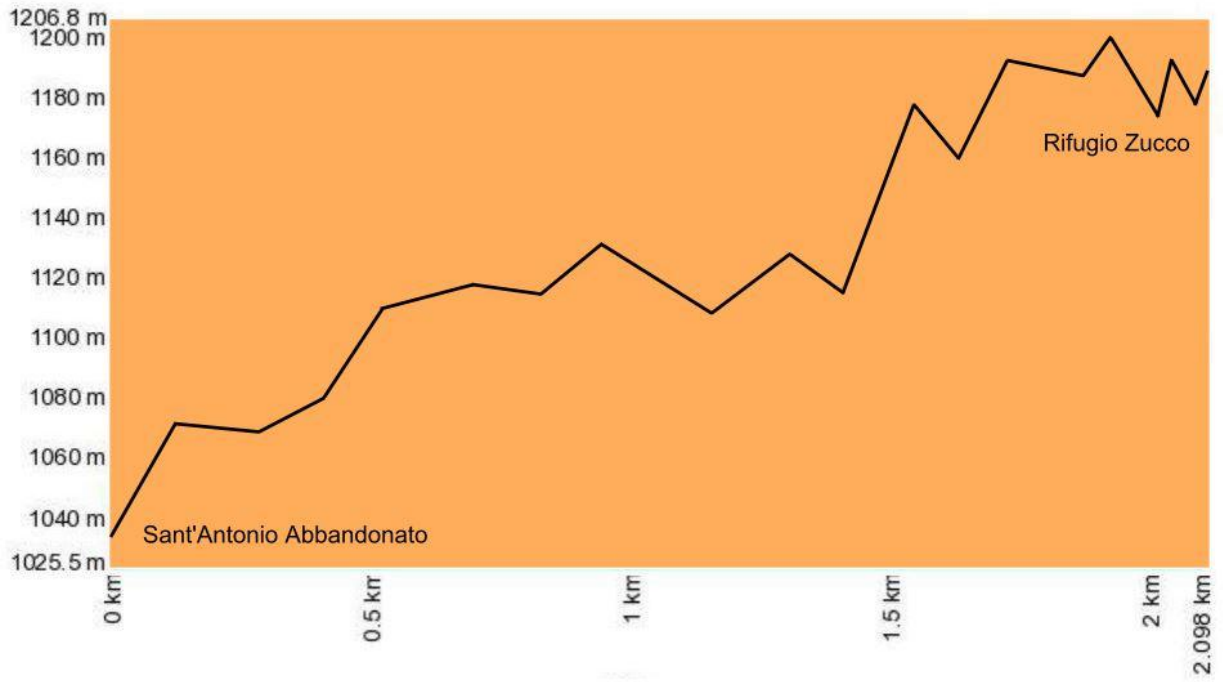


The path, a lane lined with trees, crosses this beautiful place to the hollow where the Zucco refuge stands, a renovated former hut, managed directly by G.E.S.P. members (1150 m. 1h 15' from the start).



The return is along the same route as the outward journey. During the descent, the paved sections of the route, if wet, require a little attention as they can be slippery.

# Altimetry



# Route Map

