

From Fontanella to the Colle di Monte Albano

Road access from Bergamo:

Ponte S. Pietro, Presezzo, Valtrighe, Piana, Fontanella.
Km. 19

Start of excursion:

Via Regina Teoperga, 16, Fontanella, Sotto il Monte (487 m.)

Travelling time:

1^h 20' (a/r)

Height difference:

55 m.

Difficulties:

AT  

Recommended period:

All year round

Water on the route:

YES only at the start

Rest stop:

Restaurant "Il Vitigno" Fontanella

Information:

Restaurant "Il Vitigno" Fontanella Tel: 035 791178

Topographic map:

IGM F. ° 33 III S.O. Caprino Bergamasco

Geographical coordinates:

45,4300° N, 9,3057° E

Our itinerary begins at the abbey of Fontanella (450 m.) and reaches the summit of the Colle di Monte Albano. It develops on a loop route that initially goes in the direction of Mapello, then passes over the Pontida side of the Colle and returns towards Fontanella.



We start the route after parking the car in Fontanella at the abbey.



The monastic complex of Sant'Egidio, later the Priory of Sant'Egidio, founded at the end of the 11th century by Alberto da Prezzate, has suffered numerous damages over the centuries due to neglect and military actions during the medieval period.



After passing the church on the left, we reach a small fountain.



We continue along the asphalt road in the direction of Mapello.



We continue straight ahead at the marker post on the left.



We reach a fork in the road and continue straight on.



The road now becomes unpaved.



When we reach the fork, we turn left along the short uphill road with compact cobbles.



We pass a barrier restricting vehicle traffic.



After a short stretch, we pass the second barrier.



To our right we admire the panorama of the Bergamo plain.



On our left we reach a small monument with phrases by Father Davide Tuoldo.



We continue our walk on a compact cobbled road.



We are now in sight of a house, where the road apparently ends.



Having reached the door of the house, we turn right and descend along the steep cemented descent.



At the end of the descent, we turn left and continue until we reach a fork, where we leave the road in the direction of Mapello and enter the woods.



We are now on the side of the hill towards Pontida and the path winds its way through the forest.



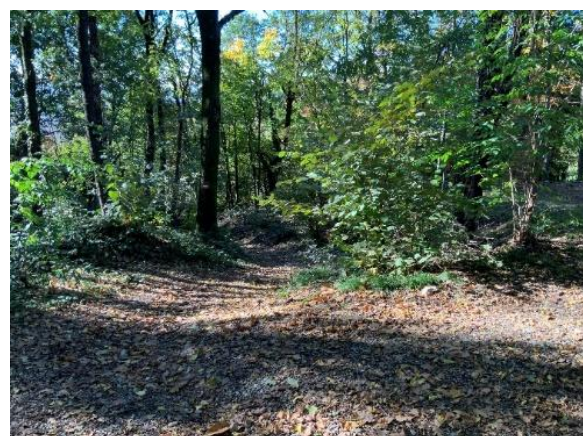
Along the way we find stretches with surfacing roots and small steps.



The path is quite narrow, but easily passable.



We reach the Colle di Monte Albano and now return to the Fontanella side to descend.



At a fork in the road, we turn left and descend along the path.



We pay attention to the final stretch, full of stones and rocks, before reaching the asphalt road.

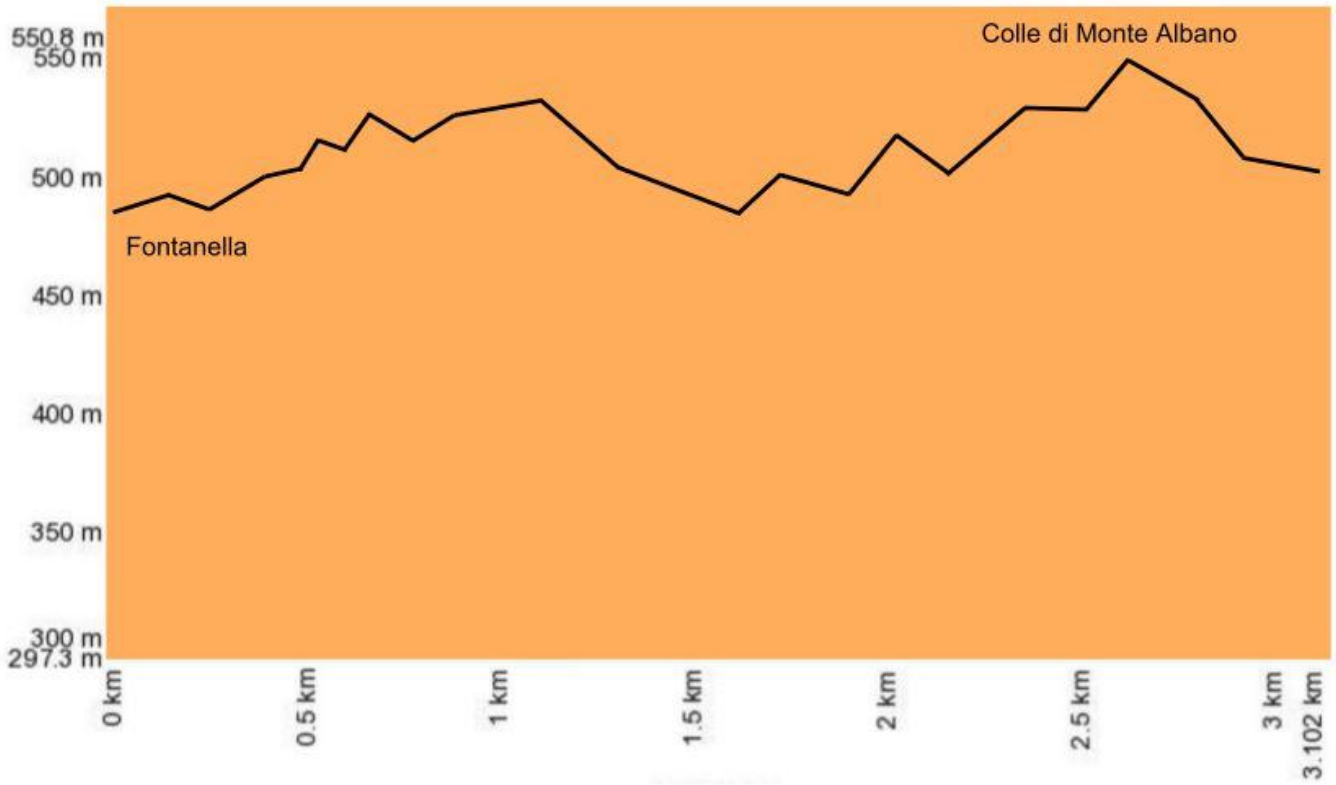


At the end of our circular route, we again reach the church in Fontanella.



We enter the church and admire the Romanesque style present and the state of conservation. We leave the church and reach the car park.

Altimetry



Route Map

