

The Imagna valley cycle/pedestrian path

Road access from Bergamo:

Almenno San Salvatore (Valle Imagna), Clanezzo
Km. 13

Start of excursion:

Parking via Belvedere di Clanezzo (336 m.)

Travelling time:

1^h 45' (a/r)

Height difference:

10 m.

Difficulties:

AT   

Recommended period:

All year round, not after heavy rain

Water on the route:

YES at Strozza

Rest stop:

NO

Information:

Municipality of Clanezzo Tel: 0345 61001 – Municipality of Strozza Tel: 035 863180

Topographic map:

IGM F. ° 33 III N.E. Zogno

Geographical coordinates:

45,7898° N, 9,6146° E



Having parked the car in via Belvedere in Clanezzo, after two hairpin bends we come to the start of the Imagna valley cycle/pedestrian path, from where our excursion begins.



After circumventing the chain, we begin the downhill route on a gravel surface.



Along the track we encounter sections with barriers towards the valley.



On our right we reach an information board.



We pass a masonry structure and the remains of the water system of an abandoned power station.



We encounter a protected waterhole along the way.



We reach a junction, where we continue straight on.



The path marked for Mount Ubione is the CAI 584.



We pass a second protected waterhole.



The bottom of the path changes constantly, but it is easily passable.



We arrive at the first picnic area.



We pass the third protected puddle.



The bottom is now on a metal grating, below which we can see the original channel of the abandoned pipeline.



The route is sinuous because it follows the conformation of the valley side towards the mountains.



We arrive at the last barrier towards the valley floor before the bridge.



We reach the Chitò stone bridge, named after the engineer who designed it.



We arrived on the bank where the Imagna Valley provincial road passes.



The path is slightly narrower, but easily passable.



We reach the picnic area where we find a working drinking fountain.

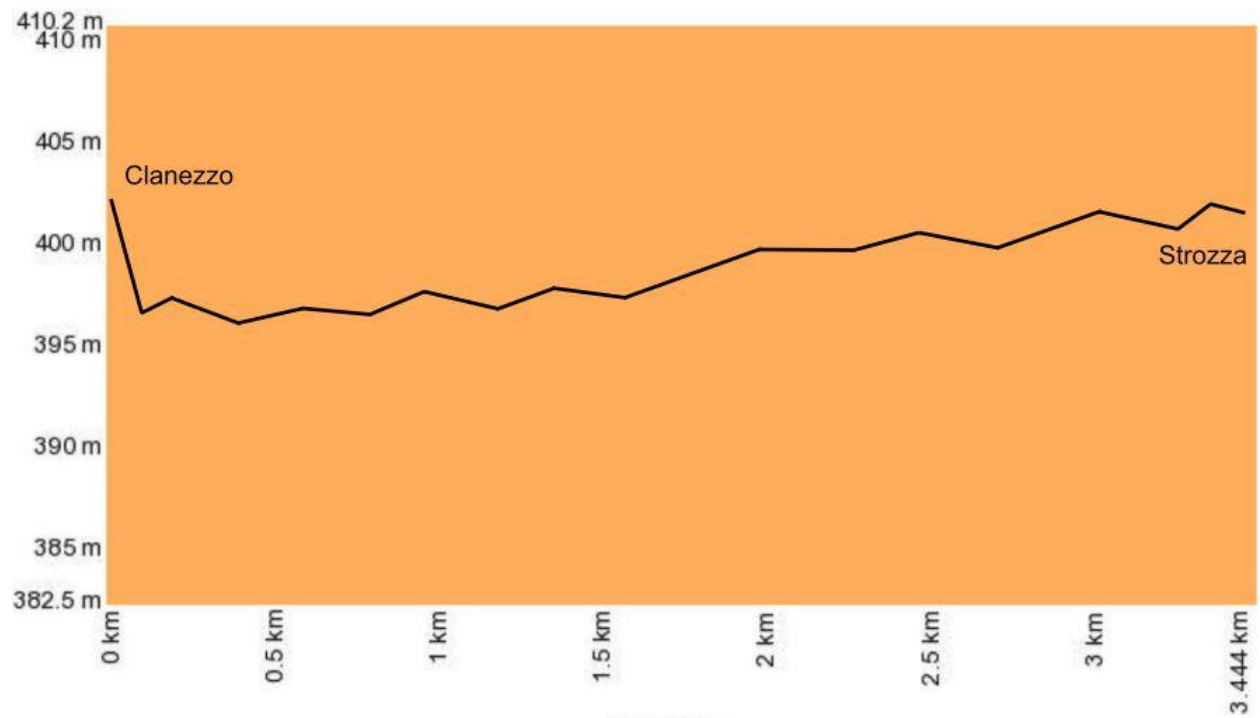


We are in front of a signpost with various pieces of information.



The route comes to an end in Strozza, now all we have to do is return to the starting point, following the same route backwards.

Altimetriy



Mappa del percorso

