

# Argon Valley loop trail

## Road access from Bergamo:

San Paolo d'Argon (Val Cavallina), for Via Mazzini, to the location Fornace  
Km. 15

## Start of excursion:

Parking of via Mazzini, location Fornace, San Paolo d'Argon (255 m.)

## Travelling time:

1<sup>h</sup> 40'(a/r)

## Height difference:

127 m.

## Difficulties:

AE   

## Recommended period:

In spring and autumn

## Water on the route:

NO

## Rest stop:

On the route no, restaurants and bars in the village.

## Information:

Parco delle valli d'Argon, Lead Authority San Paolo d'Argon  
Spinning Wheel Square, 3 Email: [info@plisdellevallidargon.it](mailto:info@plisdellevallidargon.it) Tel. 035 425311

## Topographic map:

IGM F. ° 33 II S.O. Alzano Lombardo

## Geographical coordinates:

45,696072° N, 9,813603° E

A walk in the heart of the Argon Valley, through vineyards, meadows and woods.



The starting point is the Fornace locality in Via Mazzini, where you will find a parking space near a disused factory.



We move on to reach the start of the route on a dirt road.



The route is flat and easy on compact terrain. As we continue, we come to the first small bridge that makes it easier to cross the stream, which from upstream in the valley reaches the plain. The stream is almost always full of fresh running water.



Vineyards and well-tended meadows can be seen on the left. Continue along the path to reach the second small bridge.



Once over it, keeping to the left, one reaches a farmstead with various animals, to the delight of children.



Continuing along the path, you will come across signs indicating that you are in the territory of the PLIS delle valli d'Argon.



We reach and cross the third and last small bridge.



We come to a fork in the road and continue to the right.



The route is always pleasant and full of water flowing down from the hills on the left side of the road, which is channelled into various branches, which reach the stream in the centre of the valley. At the next fork we are greeted by signs indicating the route to follow, which on the left begins to enter the forest.





The road begins to climb into the forest, rich in white and black hornbeams, turkey oaks, chestnut trees, ash trees, oaks, and in the shrub species the dogwood, wild blackthorn, elder, hazel, hawthorn and locust.



The gradients begin to increase, but the landscape is so beautiful that fatigue fades into the background.



After a bend to the right, the ground changes from fairly compacted earth to a cemented section, we continue on a false-flat section and it may happen that we wonder why the cement, but after a few bends, the answer comes.



The gradients have changed and you are not longer messing around.



The route now becomes complex and you reach gradients, albeit for short stretches, of up to 35%.



At the end of the climb, we reach a fork in the road, which gives access to a dirt road, which is very wide and easy to follow.



We head in the direction of the small churches of San Giorgio and Santa Maria d'Argon.



The road descends slightly and along the way you can find small notice boards providing information on the PLIS.





Along the way there are resting places with tables and benches to stop for a small snack.



Refreshed and happy, we continue on and reach a fork on the left, which invites us to continue along Via del Vago.



The path becomes narrower, but still smooth and the descent is pleasant. From time to time one glimpses among the foliage the valley floor with its farmsteads, vineyards, meadows and stream.



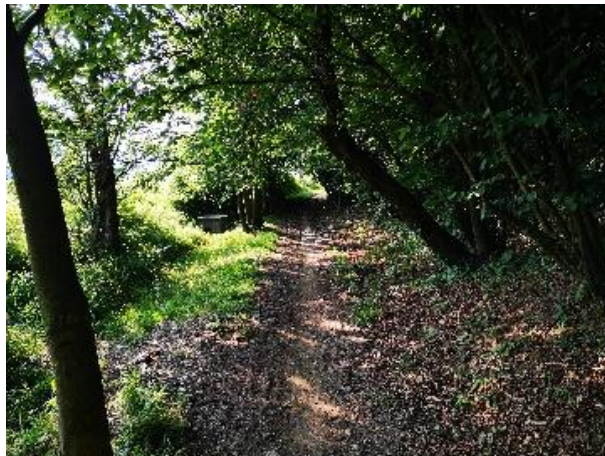
The view is very beautiful, full of sunshine, nature and greenery, and we catch a glimpse below of the dirt road we took at the start.



We reach a small fork on the left, which will allow us to either leave the Vago (track A) and reach Fornace.



Continue ahead along Via del Vago, if the meadow is cultivated or planted, and reach the valley floor to Via Mazzini (track B).



We pass the crossroads and walk into the Vagus Street.



The ground is now mixed with soil and grass.





There are small furrows and on the left we first admire vineyards and then vegetable gardens.



The path now narrows and at the end we see a house.



After turning left, we continue our descent on finely cobbled terrain.



After curving to the right, the ground is now paved.





Continuing the slight descent, we pass the Via Mazzini car park on our right.

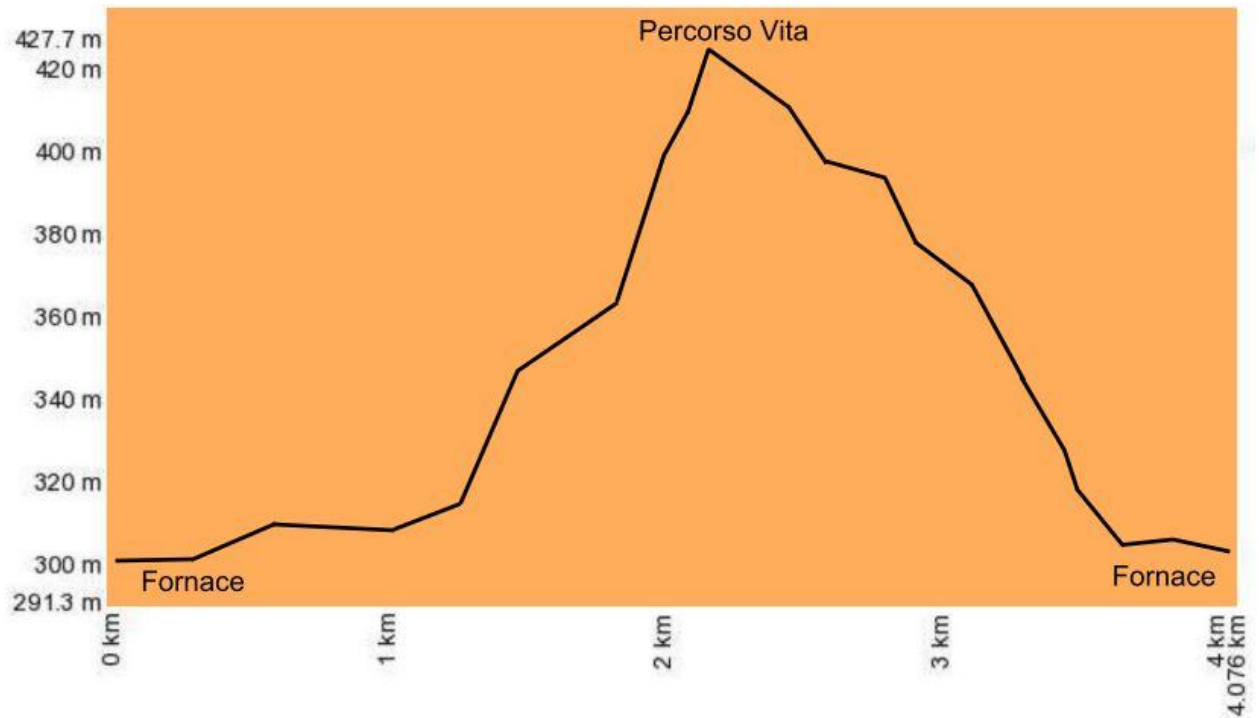


At the crossroads we see at the bottom of the road we turn left.



We continue on our way until we reach the starting point at Fornace.

# Altimetry



# Route Map

