

Bossico circular route

Road access from Bergamo:

Sovere, valle Borlezza, Bossico, via Sette Colli, via Locatelli, via San Fermo, parcheggio auto Bossico Km. 45

Start of excursion:

Car parking of Bossico (860 m.)




Travelling time:

1^h 30' (a/r)

Height difference:

125 m.

Difficulties:

AE   

Recommended period:

All year round without snow

Water on the route:

YES

Rest stop:

SI

Manager's address:

Farmhouse "Cinque Abeti" Tel: 347 9038874

Information:

Pro Loco Bossico Tel: 035 988365

Topographic map:

IGM F. ° 34 III N.O. Lovere

Geographical coordinates:

45,832250° N, 10,04157° E

We start from the Bossico car park in Via San Fermo, and proceed in the direction of the Lovere mountain, following the tourist signposts.



After parking the car we start our route.



We follow the signs of the signpost.



Before leaving the parking area, it is advisable to fill the containers with a good amount of water from the fountain present.



After passing the masonry shrine, we are about to reach the first fork in the road.



We continue straight ahead on the flat stretch.



On reaching the second fork, we choose the uphill stretch to the right, which maintains the dirt road surface for now.



Along the route, which now begins to climb more steeply, we come across a pool with a kiosk and running water, with a Non-drinking sign; the spring area is protected by wire mesh.



The bottom is now cemented with joints for the water to flow, the slope is fair and constant.



The road now enters a wide clearing, the ground is compact and it is easy to walk; looking to the right, we catch a glimpse of some villas on the Bossico hills.



Continuing along the road, the ground now becomes stony, but fairly level, and we come to the third fork.



At the signpost we continue to the right towards Monte di Lovere.



The road now has a paved surface, with compacted stones between them, and care must be taken in the event of rain due to the slipperiness.



When we reach the fourth fork, a signpost appears on the tree to the left.



Taking a left, there is a short optional diversions into a path called 'The Breath of the Woods'.



After this short diversions, we return to the main path and reach the locality of Monte di Lovere.



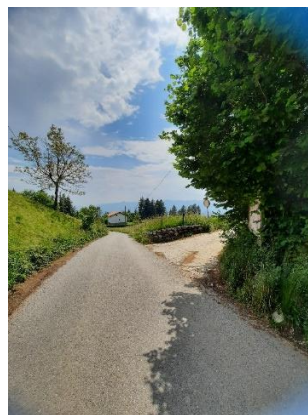
At the next fork in the road, we decide to ascend along the dirt road we find on the left in search of a scenic area, following the CAI 552 path.



After 5' of easy ascent, we reach a clearing with cultivations of pears and we are presented with this panorama of Lake Iseo.



We retrace our steps and reach the agriturismo where we stop for a quick snack.



Refreshed, we resume our walk on the asphalted, downhill stretch for the return journey. After a 10-minute walk, admiring the villas and farmhouses along the way, we reach the crossroads where we turn right, leaving the asphalted stretch and walking along a dirt track inside the forest.



Here we find a signpost of the Bossico pro loco, which provides us with the appropriate information.

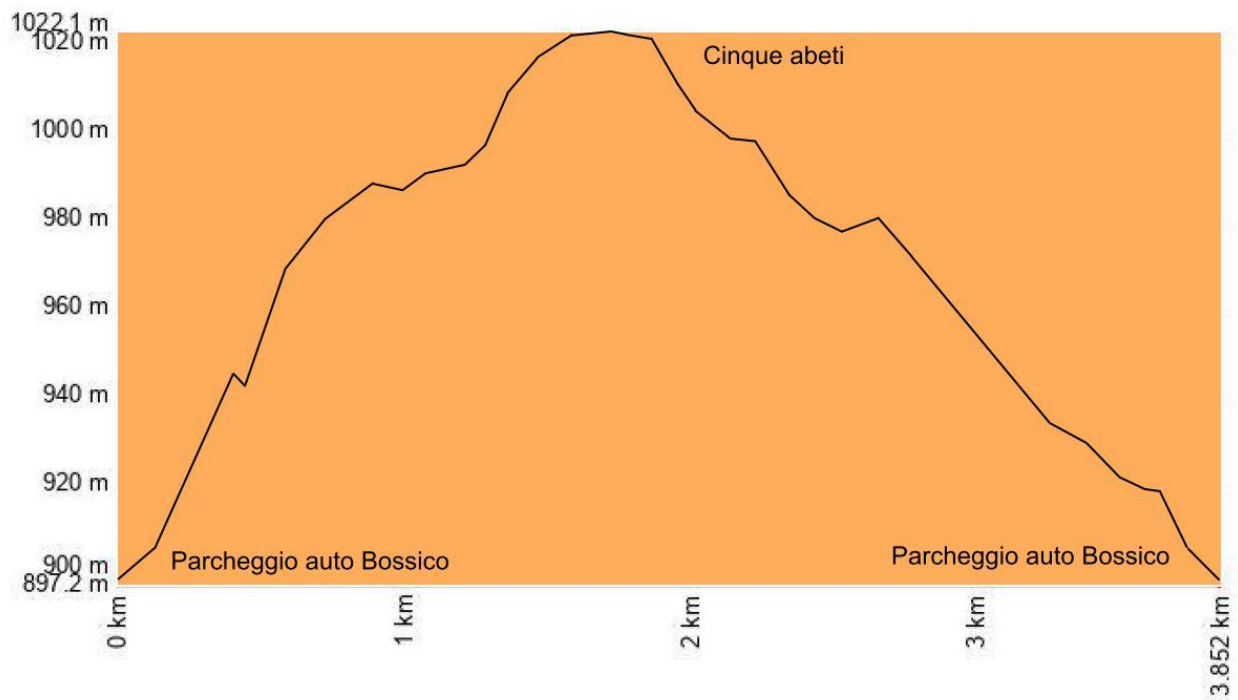


The bottom of the path is compact and makes the descent into the cool of the forest easy.



We eventually reach the first fork in our circular route and continue towards the Bossico car park area.

Altimetria



Mappa

