

# From the Madonna del Castello Sanctuary to San Tomè

## Access by road from Bergamo:

Valtesse, Sorisole, Villa d'Almè, Almenno San Salvatore.  
23 Km.

## Start of the hike:

Car park on Madonna del Castello, Almenno San Salvatore, BG (280 m.)

## Journey time:

1<sup>h</sup> 30' (a/r)

## Elevation gain:

124 m.

## Difficulty:



Tarmac road and footpath

## Recommended period:

All year round, even when there is no snow

## Water along the route:

YES

## Rest stop:

Purtiner bar: Madonna del Castello Street, 2-4, Almenno San Salvatore BG

## Information:

Municipality of Almenno San Salvatore: Tel: 035 6320211

## Topographic map:

IGM F. ° 33 III N.O. Palazzago

## Geographical coordinates:

45.74622° N, 9.60290° E



We park the car near the Sanctuary of the Madonna del Castello, on the street of the same name.



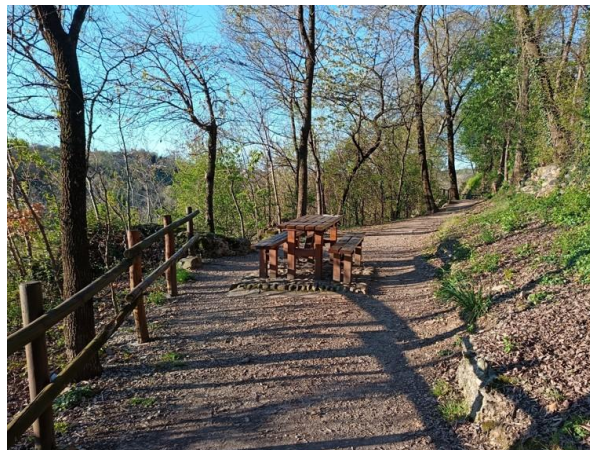
We set off, turning left onto Via Madonna del Castello and continuing along Via Ponte della Regina.



This long straight stretch will lead us to the first path we'll take today.



At the junction with Via Romanelle, we carry on straight ahead and take the footpath.



Along the well-maintained path, we pass a rest area with benches and a table.



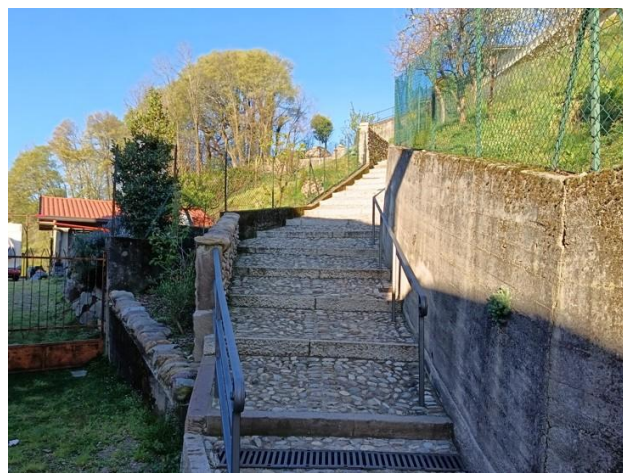
The surface now consists of rounded stones set in concrete.



In front of us is a barrier to prevent motorbikes from passing; we get past it easily.



After reaching Via Molina, we descend along the tarmac section and, at the left-hand bend, turn right.



We continue along a flight of steps with wide, low risers, which make the climb easier.



We pass an ancient masonry gate and continue along a dirt track.



We rejoin a tarmac section of Via Borgo Antico and turn right.



At the start of the uphill stretch, we turn left onto a small path.



After turning left, we descend towards the Tornago stream, crossing a small dry ford.



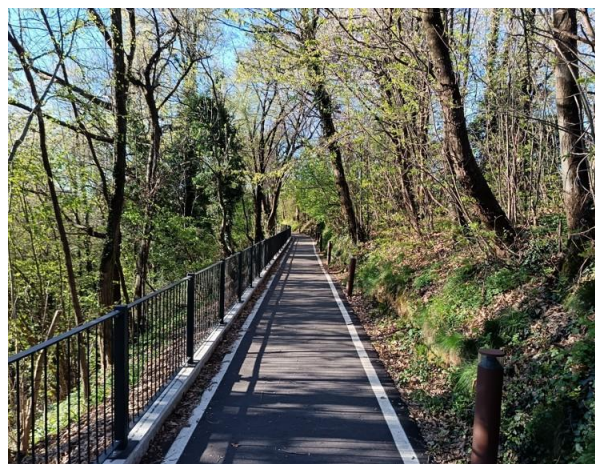
We are now on the ancient Roman bridge, which makes it easier for us to cross the stream.



We reach a junction of paths; we continue straight on along the central one.



After the climb, we reach the square in front of the Rotonda di San Tomè.



After a short stop, we turn left onto Via San Tomè; we are now in the municipality of Almenno San Bartolomeo.



We continue along Via Cascinetto and pass a historic brick tabernacle on our right.



We turn left and continue along the tarmac road downhill.



At the end of the descent, upon reaching a gate, we turn right.



We pass a house on our left and set off along a small path.



The path runs over firm ground amidst flowering vegetation, which gives us a pleasant feeling.



Now the path becomes very narrow; on our left we see a dirt track which we reach further on.



At the end of the dirt track, we turn left onto Via Campino, a tarmac road.



Upon reaching the stop sign, we turn left, staying on Via Campino.



We continue along the downhill stretch, which is pleasant given the very little traffic.



We reach a bridge over the Tornago stream; we could head back towards the Sanctuary directly by continuing along Via Molina.



We are now back in the municipality of Almenno San Salvatore.



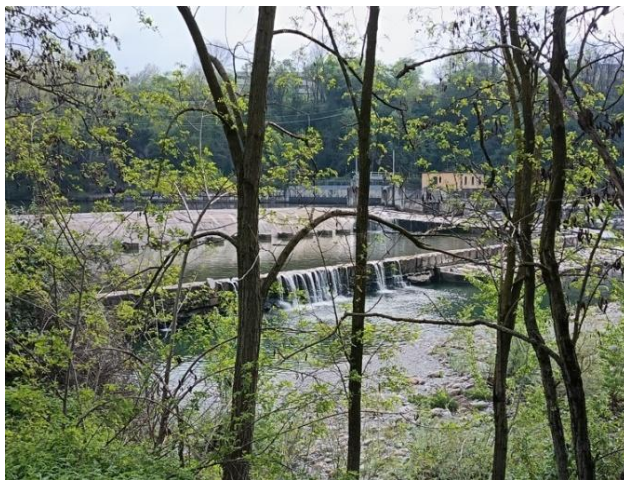
We continue our walk amongst the houses of the hamlet of Molina. At the gate on our right, at the start of the climb, we'll ask for permission to cross the field to reach a path; if this isn't possible, we'll continue the climb by turning right until we meet the path we took on the way there, which will take us back to where we started.



The walk is easy along this well-maintained stretch.



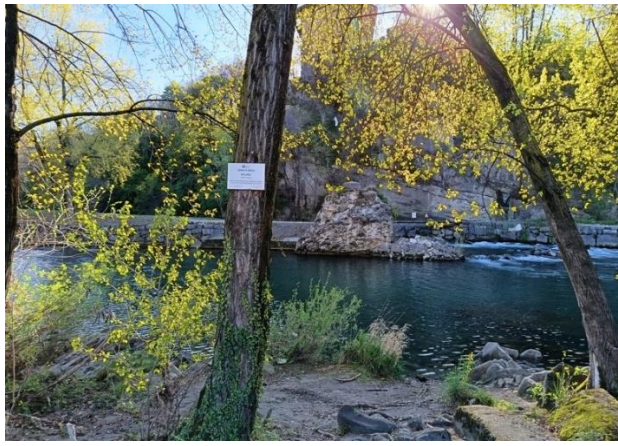
To our right, we can see a weir designed to slow the flow of the water.



Further to our right, we spot a second weir.



We continue across the meadow, following the path over firm ground.



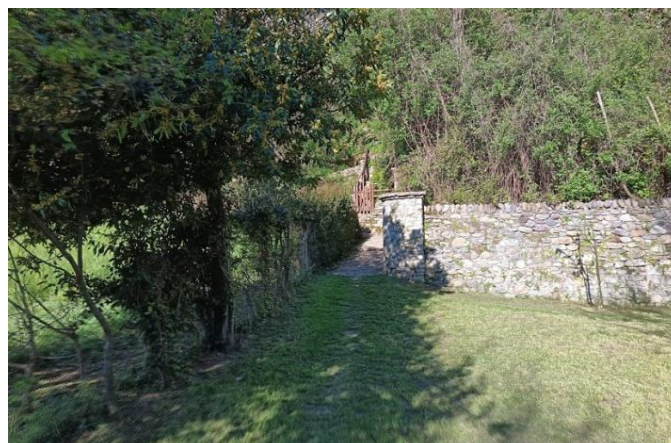
To our right lie the ruins of the Ponte della Regina Lemine, swept away long ago by a river flood.



A small structure made of branches welcomes us at the entrance to the small park.



There is a small picnic area, shaded by the trees.



We turn left onto the meadow below the Sanctuary and set off towards the final climb.



On the right at the start of the climb is a drinking fountain where you can cool off; it is advisable not to drink from it.



The climb is made easier by a flight of very wide, low steps set on rounded stones embedded in concrete.

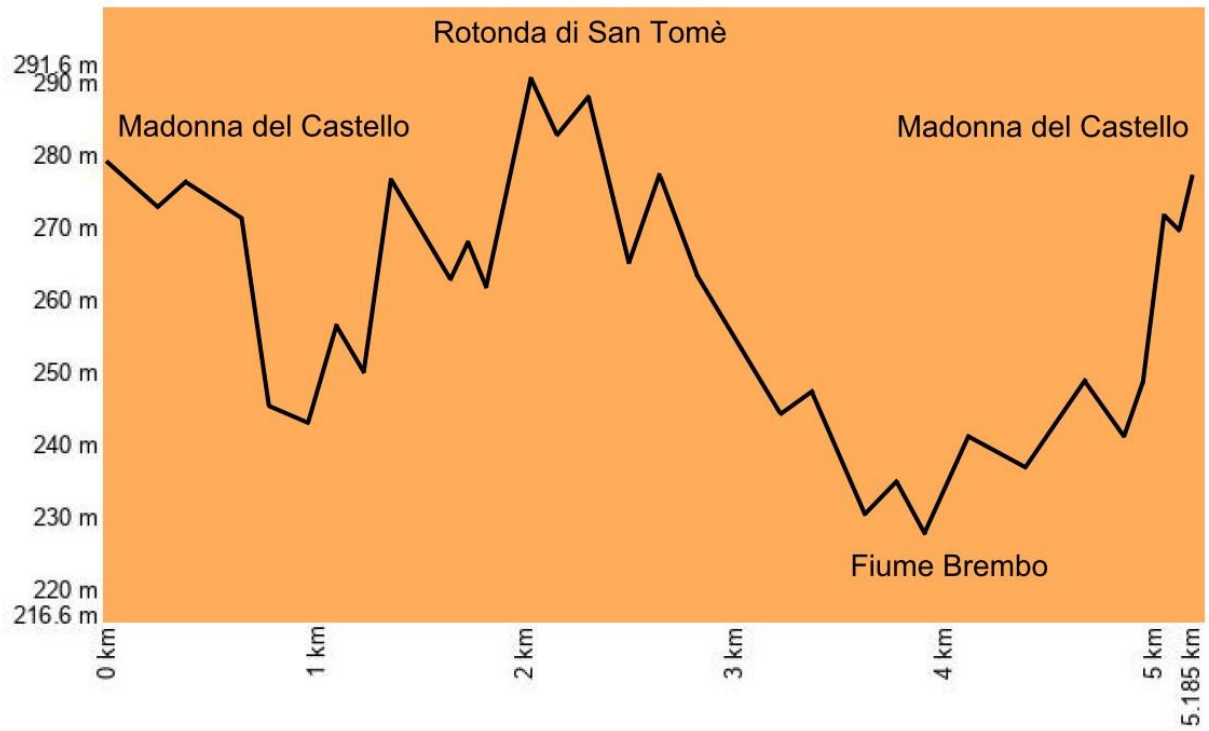


At the top of the climb, we turn right and continue along the path.



We reach the square in front of the Sanctuary of the Madonna del Castello, turning left at the end of the road.

# Elevation profile



# Route map

