

Roncobello cross-country ski trail

Access by road from Bergamo:

Villa d'Almè, Zogno, San Pellegrino Terme, San Giovanni Bianco, Lenna, Roncobello
Km. 48

Start of the hike:

Car park on Via Monte Menna, 9, 24010 Roncobello, BG (1040 m.)

Journey time:

2^h 20' (a/r)

Elevation gain:

145 m.

Difficulty:

AT 

Dirt road and footpath

Recommended time of year:

All year round, even when there is no snow

Water along the route:

YES to the sports ground

Rest stop:

New Bar Sport, via Ronchetto, 11, Roncobello, Tel: 392 0812719

Information:

Municipality of Roncobello: Tel: 0345 84047

Topographic map:

IGM F. ° 33 I N.O. Roncobello

Geographical coordinates:

45.95457° N, 9.74913° E



Remember to purchase a day pass—which must be displayed—once the road to Capovalle is open.



After parking on Via Monte Menna, we head toward the sports field.



We cross a small bridge with a dirt surface and continue toward a playground.



We pass a basketball court on our left and join the cross-country trail.



The surface is a mix of gravel, grass, and dirt, and the slope is fairly steep.



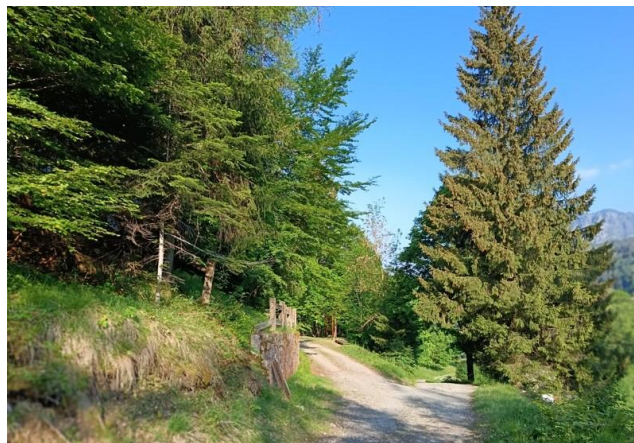
After a right-hand turn, we reach a fork and continue uphill to the left.



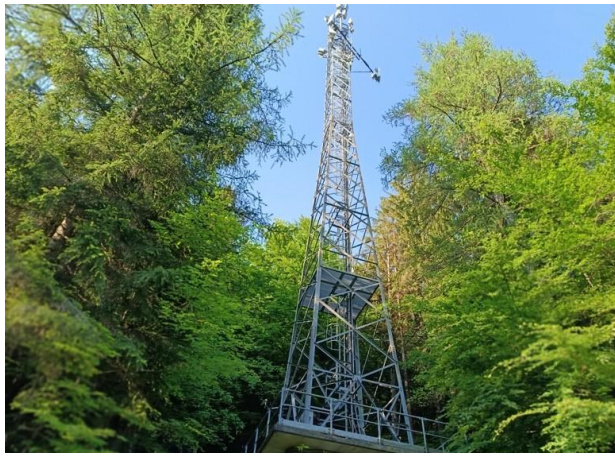
Although the path is uphill, it is easy to walk on due to the gentle slope and compact surface.



We reach the forest road and turn right onto a slight downhill slope.



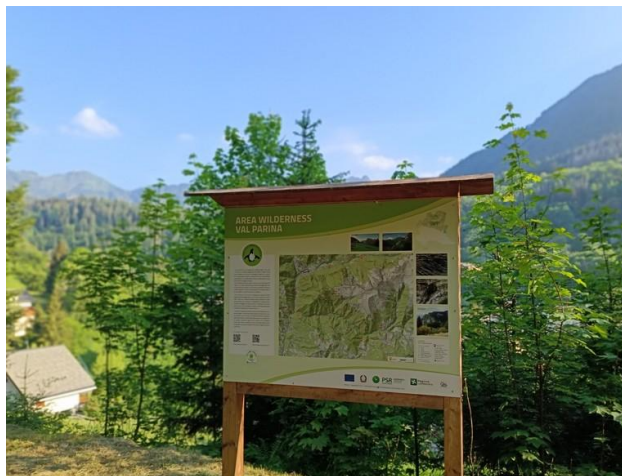
At the fork, we turn left onto a slightly uphill section.



We pass a radio repeater on our left, partially hidden among the trees.



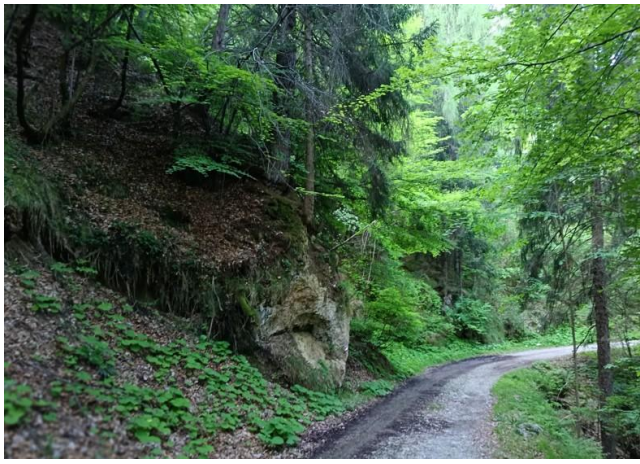
Continuing on, we come to a fitness trail station on our right.



There, we stop to read the information on a sign about the Val Parina.



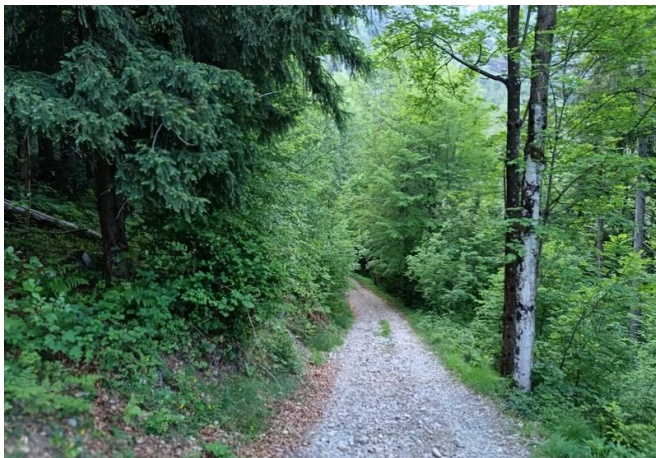
There, we stop to read the information on a sign about the Val Parina.



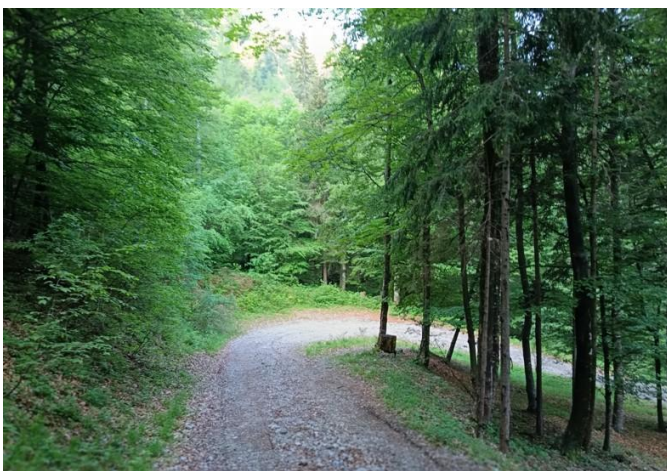
On our left, we come across a rock with a small crack; we are now on a flat stretch.



To our left, a signpost indicates the trail toward Monte Menna, but we continue straight ahead.



The path continues slightly downhill toward Corna Lunga after a left-hand hairpin turn.



Along the trail, still descending, we come to a wide hairpin bend to the right.



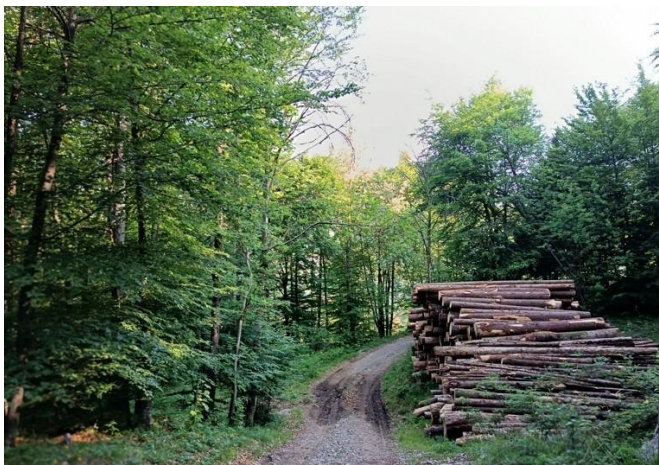
The surface is now a mix of compact soil and grass, but easily passable.



The path climbs slightly over a surface of small stones and soil.



The bench on the left is a welcoming spot for a short break to take a sip of water from your water bottle.



We pass a pile of logs on our right, ready to be transported down to the valley.



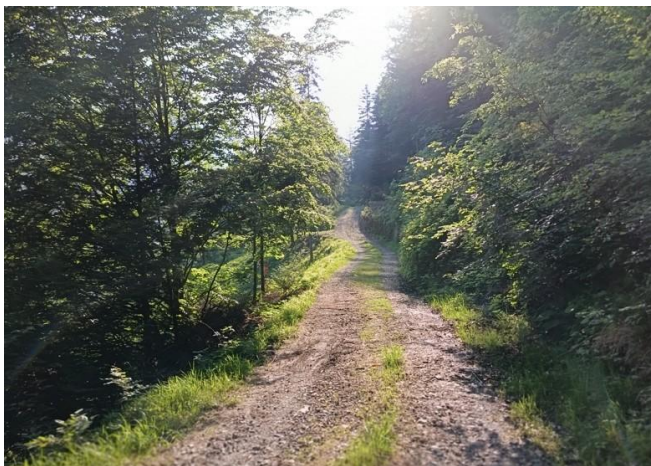
On a right-hand bend, among the trees, we can make out the hamlet of Costa.



Continuing on, a house appears on our left, with its lawn facing the valley.



Upon reaching the fork, we turn left toward Roncobello.



We recognize the path; it's the one we took this morning on the way up.



Upon reaching the fork, we turn left onto a grassy stretch.



The descent is pleasant, the slope isn't too steep, and the ground makes for easy walking.

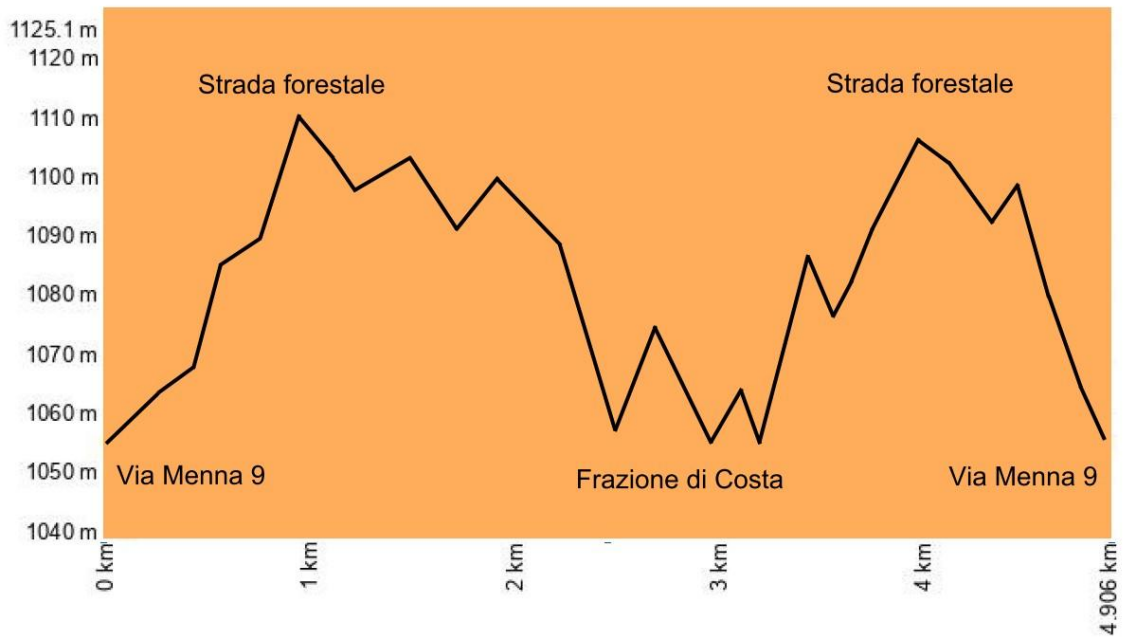


The Valsecca stream flows to our right; we're now on a flat stretch.



We cross the ford and reach the spot where we parked.

Elevation profile



Route map

